



A monthly electronic newsletter
to keep residents informed.
Please encourage friends and
neighbors to sign up for Constant
Contact by [Clicking Here](#)

THE BOROUGH OF ALLENDALE

Happenings JANUARY 2023

A Message from Amy Wilczynski. . .

On behalf of the entire Council and Borough staff, I would like to wish our residents a very happy, healthy, and prosperous 2023. We ended the year with a festive holiday walk sponsored by the Allendale Chamber of Commerce, including a visit from a jolly fellow from the North Pole and the lighting of the famous AB&G tree. We also had our annual Menorah Lighting and celebrated with homemade goodies and children singing Hanukkah songs. Another noteworthy event is that we closed on 220 WC. The building that was formally Black Millwork will soon be demolished and the building of 70 units plus our community center will commence shortly after.

This is my first newsletter and I would like to express my sincere thanks to you all for your support and faith in me as Mayor. It is an honor and a privilege to serve this wonderful community in this new capacity and I look forward to serving the Borough alongside our amazing staff, volunteers, and fellow Council Members.

Similar to my time served on the council, I pledge to continue to provide an open and transparent government that is accessible to all residents and constantly look to improve and update various ways to communicate. I am committed to ensuring that all voices are heard regarding all issues in the community. Be on the lookout for 'Coffee with the Mayor' dates for residents to share ideas, concerns, and stories in a casual setting.

Throughout 2023, I am committed to making improvements in the way the borough operates and look to streamline processes to increase efficiency. The entire council and I strive to provide the best quality of life for all residents and are cognizant of the ever-steep cost of living in this area and in these times. We analyze and research every opportunity to provide quality borough services and cut costs when appropriate while maintaining the infrastructure and high quality of life. We aggressively pursue grants and shared services when feasible to offset costs. I promise you, we are all here to make Allendale a better place during our terms from when we started and continue to work hard to make our community better, more resilient and fiscally strong moving forward.

The Mayor's door is open to all, I look forward and welcome you to share your ideas and concerns at any time!

Warm Regards,
Amy

Get In Touch. . . Stay Connected. . .

WWW.ALLENDALENJ.GOV



Amy Wilczynski
Mayor

Liz Homan
Council President

Susanne Lovisolo
Councilwoman

Ed O'Connell
Councilman

Matt O'Toole
Councilman

Tyler Yaccarino
Councilman

Mayor & Council Corner

On January 5th the Allendale Mayor and Council held its annual Reorganization Meeting. Assemblyman Christopher DePhillips presented Mayor Ari Bernstein and Councilman Steve Sasso proclamations honoring their service to the Borough. Amy Wilczynski was sworn in as Allendale's new Mayor. Tyler Yaccarino joined Matt O'Toole in being sworn in as members of the Council.

Rounding out this great evening was the swearing-in of our Allendale Fire Department and Volunteer Ambulance Corp. leadership. Last but not least we had the swearing-in of Allendale's newest Police Officers John Rubino and Mark Dunn, Jr.

Congratulations to all, and thank you for your service to Allendale!



220/230 West Crescent Update

(formerly Black Millwork)



The Borough just closed on 220 WC (front building) in December 2022.

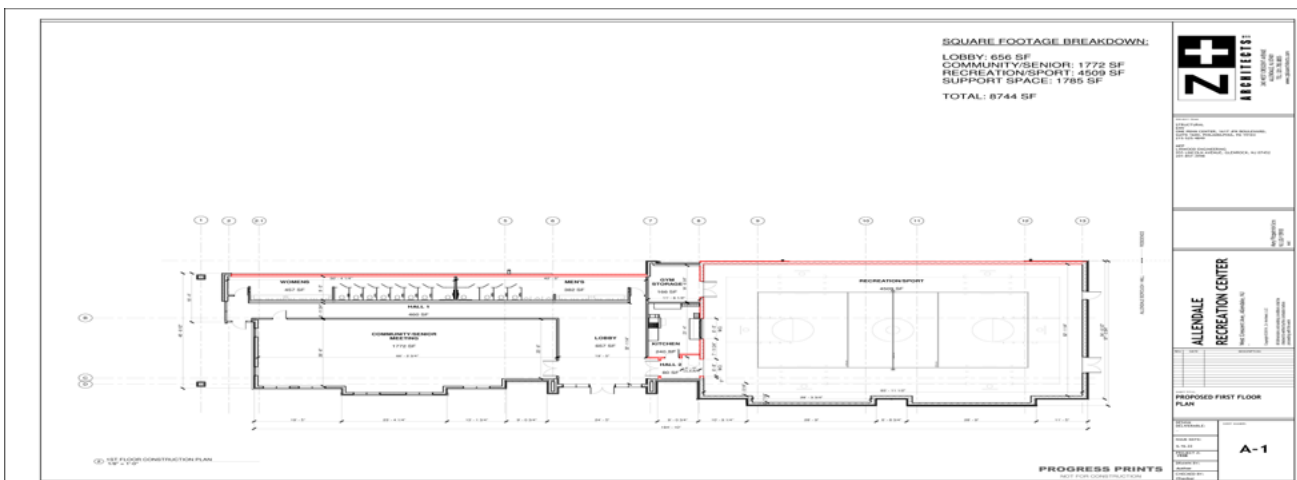
As soon as permits are secured, the front building will be demolished and the building of 70 rental units will commence. We expect this to happen within the next month!

Currently, The Borough is finalizing plans for the community center and will solicit bids according to the local public contracts law.

The community center will be comprised of a mid-sized sports court, a commercial kitchen, and a large community room for Allendale residents and seniors. The location of the community center is directly in front of the condo units.

The Borough also applied for a Federal grant and has so far received encouraging news that we will receive it. This grant will make a significant impact on the cost of this project.

The Borough closed on the back building (230 West Crescent) last year which is currently functioning as a small warehouse.



SAVE THE DATE!

Wednesday, April 26, 2023

Please join The Allendale Woman's Club at
Fashioning Friendships for Life,
a fun and exciting Ladies Night Out!

Seasons in Washington Township

6:30 - 11:00

FASHION
SHOW
2023



We are excited to announce that **Best Buddies NJ** has been selected as our primary beneficiary for our annual Fashion Show.

Best Buddies NJ works to develop inclusionary opportunities for the mutual benefit of individuals with and without intellectual and developmental disabilities (IDD).

ALLENDALE HISTORY

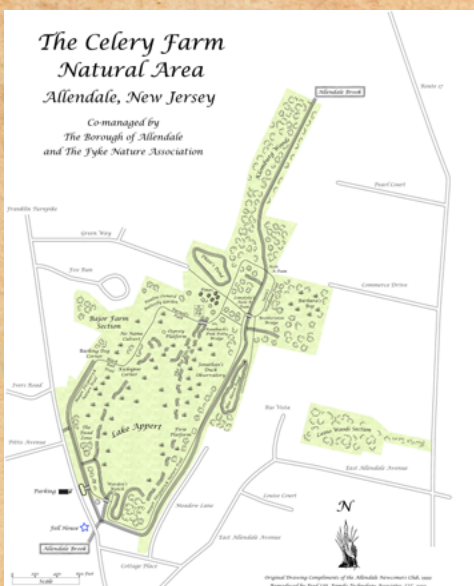
FRED LITT
BOROUGH HISTORIAN

PRESERVING THE CELERY FARM

In the 1970s, Mayor Ed Fitzpatrick began an effort for the borough to preserve the open space bordered by Franklin Turnpike and Cottage Place. The McBride family, who had owned the property since World War II, sold it to the New Jersey Conservation Federation, which sold it to Allendale in 1981. Additional acreage was purchased in later years, and Stiles Thomas was appointed by the council to the newly created post of marsh warden to oversee the 107-acre nature sanctuary, known today as the Celery Farm.

On September 30, 1983, former mayor Edward Fitzpatrick and Allendale resident Stiles Thomas accepted the Conservationist of the Year Award from Thomas G. Gilmore, Executive Director of the New Jersey Audubon Society, for their leadership in preserving the Celery Farm.

The story of the Celery Farm began in 1866 with John Zabriskie of Hohokus purchasing the Wolf Swamp (Celery Farm area) for use as a peat farm. Henry J. Appert purchased the property in 1888 and renamed it the Allendale Produce Gardens. In 1915, Arthur Appert bought out his father's interest in the venture. The 100-plus acres were the basis of a flourishing enterprise that sent lettuce, onions, and celery (with the brand names Triple A and King Arthur) to Philadelphia, New York, Paterson, Boston and to the Campbell Soup Company in Camden. In 1943, Appert retired, selling the business to McBride Inc. of Paterson. Beginning in 1977, Mayor Fitzpatrick led the effort to purchase the Celery Farm from the McBride family. He obtained the services of the New Jersey Conservation Foundation (NJCF), a nonprofit organization, who purchased the property in 1979 for \$170,000. The NJCF held it as the borough applied for Green Acre funds. In 1981, the NJCF sold the 60-acre Celery Farm wildlife sanctuary to Allendale. Since then, an additional 47 acres have been added. In 2003, Allendale honored Stiles Thomas for his dedication and efforts toward preserving and maintaining the Celery Farm Natural Area with a new welcoming center and a plaque, located at the entry to the sanctuary. On September 13, 2008, Allendale celebrated Thomas's 25 years as marsh warden with "Stiles Thomas Day." On October 27, 2013, in recognition of her longtime efforts to preserve a 20-acre parcel known as the Allendale Wetlands, Lillian Thomas, Stiles' spouse, was recognized with a mayoral proclamation and subsequently with a plaque near Yeomans Lane. The Allendale Wetlands were renamed the Lillian Thomas Natural Area.



Map of Celery Farm Natural Area. Original illustration by the Allendale Newcomers Club in 1999. Reimagined by Fred Litt, Family Technology Associates, LLC., 1999.



The Fyke Nature Association, a volunteer organization dedicated to conservation and environmental protection, co-manages the Celery Farm with the Borough of Allendale. At its 40th anniversary dinner on September 30, 1983, the association honored former mayor Edward Fitzpatrick for his efforts to preserve the Celery Farm. Former Mayor Edward Fitzpatrick (left) and Stiles Thomas (right) of Allendale accept Conservationist of the Year Award from Thomas G. Gilmore, Executive Director of N.J. Audubon Society. (Courtesy of Susan Fitzpatrick Anicito.)



ALLENDALE AMBULANCE CORPS

SERVING SINCE 1937

The Allendale Volunteer Ambulance Corps is a 501(c) 3 nonprofit organization. We depend solely on fundraisers and contributions to keep our FREE ambulance service available to YOU-- our Allendale neighbors! Keeping our two Ambulances on the road safely, equipped with NJ Certified and Trained EMT's, in order to supply our patients, the BEST care possible is our NUMBER 1 goal!

Please come out and support us – and ENJOY a fun night out with your neighbors, friends, and family!



Allendale Volunteer Ambulance Corps
INVITES YOU

to their 2nd Annual Casino Night

Friday, March 24, 2023

6:30 pm

At Ramsey Country Club, Ramsey, NJ

Prizes! Tricky Tray! Games! Food! Open Bar!



Tickets are \$125, which includes \$50 in free chips!

For information and tickets, email:

casinonight@AllendaleAmbulance.org



ALLENDALE FIRE DEPARTMENT

**THE ALLENDALE FIRE DEPARTMENT
IS ALWAYS LOOKING FOR NEW MEMBERS!**

WE ARE IN NEED OF MEMBERS TO CONTINUE TO SERVE THE COMMUNITY!

If you are between the ages of 16 and 18, you are eligible to join as a Junior Member.

Anyone 18 years or older is eligible to join the active department.

ANYONE INTERESTED IN JOINING EMAIL: firechief@allendalenj.gov

Quick Notes...

REMINDER

**1st Quarter 2023 Property Taxes are due February 1, 2023
The Grace Period ends February 10, 2023**

Payments can be made online at allendalenj.gov

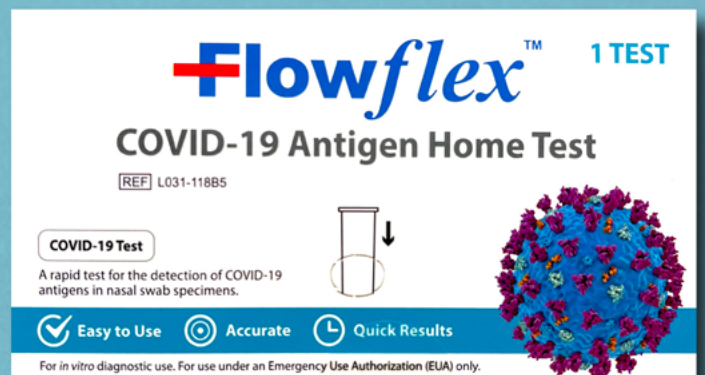
Or

Checks can be mailed or dropped off at:

Borough of Allendale
500 W. Crescent Avenue
Allendale, NJ 07401

If paying by check, **please make sure your check is signed and dated correctly.**
We **DO NOT** accept post-dated checks!

FREE
COVID - 19
Rapid Tests
Available
@ Allendale
Borough Hall



Distributed By:





The Borough Code states that you must have your dog on its leash at all times. This includes Crestwood Park.

[CLICK HERE FOR ORDINANCE](#)

MOVING OUT?

For your final
water bill contact

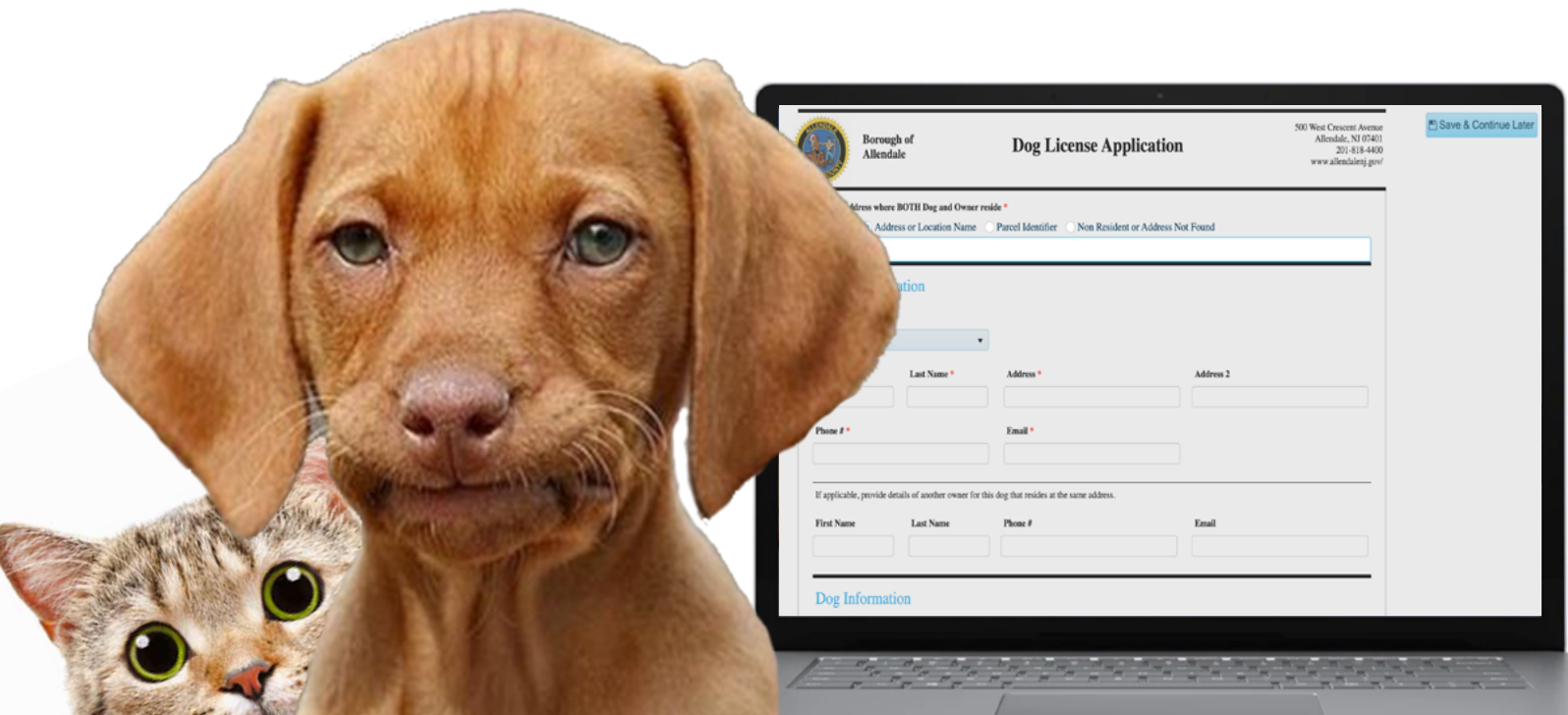
 **VEOLIA**
at
855-367-6708

For **Non-Emergency**
Notifications please
register to receive
updates from
[Constant Contact](#)

For **Emergency**
Notifications please
register to receive
updates from
[SWIFTREACH](#)

WWW.ALLENDALENJ.GOV

IT'S NJ STATE LAW THAT RESIDENTS MUST REGISTER YOUR DOGS AND CATS! DON'T FORGET TO REGISTER YOUR PETS FOR 2023! CLICK [HERE](#) TO APPLY NOW!





BERGEN COUNTY UTILITIES AUTHORITY

2023 Household Hazardous Waste (HHW) Collections

Bergen County Utilities Authority

Foot of Empire Blvd., Moonachie

Saturday, March 11, 2023

Saturday, November 18, 2023

Bergen County Campgaw Reservation

200 Campgaw Rd., Mahwah

Saturday, May 13, 2023

Saturday, July 15, 2023

Saturday, September 9, 2023

Bergen Community College

400 Paramus Rd., Paramus

Sunday, April 16, 2023

Sunday, June 11, 2023

Sunday, October 15, 2023

HHW event collection hours are 9:00 a.m. - 3:00 p.m. (rain or shine)

2023 Document Shredding, Electronics Recycling and Tire Recycling

Bergen Community College

400 Paramus Rd., Paramus

Sunday, April 30, 2023

Saturday, August 12, 2023

Bergen County Campgaw Reservation

200 Campgaw Rd., Mahwah

Saturday, June 3, 2023

Sunday, October 1, 2023

*Document shredding, electronics and tire recycling event collection hours are
9:00 a.m. - 2:00 p.m. (rain or shine)*

Visit www.bcua.org for full details

GARBAGE & RECYCLING REMINDERS

- All items should be put out *starting at 6pm the night before* the scheduled collection.
- Building materials and wood pallets *are not collected* by our garbage contractor. You must make your own arrangements to dispose of them.
- You must schedule a one-time, courtesy move-out pickup with info@AllendaleNJ.gov at **least 4 WEEKS in advance**. No metal, electronics, or recyclable materials collected.
- Remember to make sure that the lids are securely on top of your cans, especially garbage. This will help keep wildlife at bay.
- Collection containers can be no larger than 30 gallons.
- Bulk Trash must be placed on the curb and **not placed** in the road.
- Food containers being recycled need to be rinsed and cleaned before you dispose.
- Soiled pizza boxes are garbage and **NOT** recyclable.

GARBAGE

- Household kitchen, office and bathroom trash
- Styrofoam

BULKY TRASH

- Furniture
- Carpeting
- Non-metal items
- Windows/mirrors/pane glass must be taped with an "X"

METAL

- Anything that is least 75% metal
- Artificial Holiday Trees



RECYCLING

Container One:

- Newspapers and inserts
- Junk mail, envelopes, office, notebook, construction paper
- Smooth and corrugated cardboard
- Glossy magazines and catalogs
- Soft covered books and telephone books
- Non-metallic wrapping paper and greeting cards
- Shredded paper
- Brown grocery bags

Container Two:

- Food and beverage containers
- Plastic containers with a recycling code 1, 2, 5, 7
- Aluminum cans, foil
- Aseptic packaging (ex: soup, milk containers)
- Metal cans and empty aerosol cans
- Green, clear and brown glass bottles and jars

** Please note that there are 2 separate trucks that pick up recyclables.

THE BOROUGH OF ALLENDALE 2023
GARBAGE & RECYCLING GUIDE
SOLID WASTE & RECYCLING CURBSIDE REGULATIONS & SCHEDULE

WG West Garbage EG East Garbage WB West Bulk EB East Bulk WR West Recycling ER East Recycling M Metal

JANUARY 2023 **FEBRUARY 2023** **MARCH 2023**

APRIL 2023 **MAY 2023** **JUNE 2023**

JULY 2023 **AUGUST 2023** **SEPTEMBER 2023**

OCTOBER 2023 **NOVEMBER 2023** **DECEMBER 2023**

Get In Touch... Stay Connected...
WWW.ALLENDALENJ.GOV [f @AllendaleNJBorough](https://www.facebook.com/AllendaleNJBorough)

[Click Here for the full 2023 Allendale Garbage & Recycling Guide](#)

***ADMINISTRATION, CLERK'S OFFICE,
BOARD OF HEALTH, & TAX ASSESSOR'S OFFICE***

Ron Kistner, Administrative Officer

RonKistner@AllendaleNJ.gov OR Ext. 501

Linda L. Cervino, Clerk

LindaCervino@AllendaleNJ.gov OR Ext. 216

Amanda Richards, Administrative Assistant

AmandaRichards@AllendaleNJ.gov OR Ext. 218

John Gil, Director of Communication

JohnGil@AllendaleNJ.gov OR Ext. 211

Angela Mattiace, Tax Assessor

AngelaMattiace@AllendaleNJ.gov OR Ext. 210

Health Department

HealthDept@AllendaleNJ.gov OR Ext. 211

VITAL STATISTICS RECORDS

(MARRIAGE LICENSES, DEATH AND BIRTH CERTIFICATES)

Northwest Bergen Regional Health Commission 201-445-7217

BUILDING DEPARTMENT

Linda Garofalo, Technical Assistant

LindaGarofalo@AllendaleNJ.gov OR Ext. 201

Anthony Hackett, Construction Official

CodeOfficial@AllendaleNJ.gov OR Ext. 208

LAND USE, ENGINEERING, & PROPERTY MAINTENANCE

Linda Garofalo, Land Use Administrator

LindaGarofalo@AllendaleNJ.gov OR Ext. 212

Mike Limatola, PMO

mikelimatola@allendalenj.gov

TAX & FINANCE OFFICE/WATER PAYMENTS

Alissa Mayer, CFO & Water Collector

AlissaMayer@AllendaleNJ.gov OR Ext. 205

Gina Wittmaack, Tax Collector

GinaWittmaack@AllendaleNJ.gov OR Ext. 206

ALLENDALE MUNICIPAL COURT

Rose Novelli-Salyer, Court Administrator

novellir@ho-ho-kusboro.com OR 201-652-0699

MAYOR & COUNCIL

Amy Wilczynski, Mayor

AmyWilczynski@AllendaleNJ.gov

Liz Homan, Council President

LizHoman@AllendaleNJ.gov

Chair – Water, Sewer and Public Utilities Committee

Member of Administration, Finance and Human Resources Committee

Susanne Lovisolo, Councilwoman

SusanneLovisolo@AllendaleNJ.gov

Chair – Administration, Finance and Human Resources Committee

Member of Land Use & Construction Code Committee

Ed O’Connell, Councilman

EdwardOConnell@AllendaleNJ.gov

Chair – Public Works Committee

Member of Public Safety Committee

Matt O’Toole, Councilman

MatthewOTOole@AllendaleNJ.gov

Chair – Public Safety Committee

Member of Public Works Committee

Tyler Yaccarino, Councilman

TylerYaccarino@AllendaleNJ.gov

Chair – Facilities, Parks and Recreation Committee

Member of Water, Sewer and Public Utilities Committee

Get In Touch. . . Stay Connected. . .
WWW.ALLENDALENJ.GOV



@ALLENDALENJBOROUGH