



## IN THIS NEWSLETTER

**MAYOR'S MESSAGE**  
PAGE 2

**GARBAGE & RECYCLING**  
PAGE 3

**ALLENDALE GREEN TEAM**  
PAGE 3

**AC COLLECTION**  
PAGE 4

**BEECH TREE DISEASE**  
PAGE 5

**TAX REMINDER**  
PAGE 6

**CERT NEWS**  
PAGE 6

**CRESTWOOD CONCERT SERIES**  
PAGE 7

**E-BIKE LAWS**  
PAGE 8

**COMMUNITY CENTER  
SUMMER PROGRAMS**  
PAGE 9

**AVAC NEWS**  
PAGE 10

**ALLENDALE WATER FESTIVAL**  
PAGE 11

**TURN THE TOWNS TEAL**  
PAGE 12

**LIBRARY NEWS**  
PAGE 13

**ALLENDALE FESTIVAL DAY**  
PAGE 14

**ALLENDALE 5K**  
PAGE 15

**STAFF DIRECTORY**  
PAGES 16-17



A MONTHLY  
*ELECTRONIC*  
NEWSLETTER  
TO KEEP  
RESIDENTS  
INFORMED



[SIGN UP HERE](#)



June 28 - Allendale Chamber of  
Commerce's Ribbon Cutting  
Ceremony for owner Caitlyn Coyle's  
new Allendale business,  
*Ritual Fitness*.

*Get in touch...  
Stay Connected*



[www.allendalenj.gov](http://www.allendalenj.gov)



**Mayor Amy  
Wilczynski**

**Liz Homan  
Council President**

**Joseph Daloisio  
Councilman**

**Matt O'Toole  
Councilman**

**Susanne Lovisolo  
Councilwoman**

**Ed O'Connell  
Councilman**

**Tyler Yaccarino  
Councilman**



## A MESSAGE FROM MAYOR AMY WILCZYNSKI

With summer in full swing there are many activities to share. We hope residents are enjoying the free summer concert series at Crestwood Lake as well as the educational and gym activities at the community center.

Crestwood Lake continues to be the jewel of our summer. Membership remains strong and I encourage all Allendale residents to join! We have maintained very low rates for residents, and the water quality and beach has never been better. Our next concert is this Saturday, July 19th at 7pm featuring RIFF, a rock band covering decades of favorites.

The Independence Day festivities were a huge success! Thank you Holiday Observers for all your work as well as the coordination between our DPW, Police, and CERT teams. We're grateful to our community for continuing to support and enjoy this local tradition.

The deer overpopulation is constantly being explored by the Borough, and I continue to advocate for a regional solution at every mayor's meeting. The reality is that any actions we should choose to do solely on a specific Borough owned property would have minimal impact on the majority of the town.

Many residents have reached out to ask if they could band together on private properties in their own neighborhoods for more targeted deer management. This is allowable by NJ state law. You can go to <https://www.ubnj.org> for more information. I remain committed to continuing these conversations and working collaboratively until we find a viable and impactful plan for Allendale. Please remember DO NOT FEED THE DEER!! Feeding the deer is not only against Borough Ordinance but it leads to altering natural behaviors, causing a variety of problems.

The state's efforts to promote low carbon transportation including new legislation incentivizing this has led to a surge in E-bikes in NJ. This influx of E-bikes has caused significant challenges for all municipalities, specifically safety issues. Please see further details on the law in this newsletter and if you have any questions, please call Allendale police.

The newly formed shade tree commission continue to meet monthly to finalize beautification initiatives to be rolled out throughout the year. Allendale takes pride in preserving our beautiful trees and we want to inform residents of a new disease that is threatening some of our older trees called The Beech Leaf Disease. If you have a beech tree, look for dying leaves....if you catch it early, the tree can be saved! See more info in this newsletter.

The Borough is coordinating with Allendale Recreation Commission (ARC) to continue the capital campaign to rehabilitate our fields. Also- stay tuned for more information on the ARC 5k coming up in the fall. The run is in honor of Allendale resident Sharon Moran. The McKinley Place Family Foundation has generously offered to donate dollar for dollar up to \$25,000!! All proceeds will be going towards Allendale projects. Please consider being a sponsor or donating!

We continue to apply for grants whenever we can to save taxpayer dollars. We recently applied for a state DOT road paving grant for some residential streets as well as the transit lot downtown. We are also in the process of getting specs for new tennis/pickle courts and basketball court up at the red barn - all from Bergen County grants.

The mural project will be installed by the end of the summer, in time for Allendale Festival Day on September 20th. We look forward to bringing the community together, especially the students who worked hard on this project, to celebrate a unique and beautiful piece of art for our downtown.

Finally mark your calendars for movie night sponsored by Lee Memorial Library next Wednesday, July 23rd at 8:30 on the library lawn (Rain date 8/24). The movie is the 2010 original, animated 'How to Train Your Dragon'.

Enjoy the summer!

Please stay informed: [sign up for alerts and emails](#) and follow the [Mayor Amy Wilczynski Facebook](#) and [Instagram](#) pages as well as the [Borough Facebook](#) page. Also feel free to [contact any council member or myself](#).

If you know someone who does not have access to a computer, please let us know so we can mail them Borough updates.

Please say hi anytime you see me around town!



Mayor Amy Wilczynski



## Garbage & Recycling Schedule



WG West Garbage WB West Bulk WR West Recycling  
EG East Garbage EB East Bulk ER East Recycling

JULY 2025

SUNDAY	MONDAY	TUESDAY	WEDNESDAY	THURSDAY	FRIDAY	SATURDAY
		1 EG	2 EB	3 ER WG	4 <i>HAPPY 4th of July</i>	5 EG
6	7 WG	8 EG	9 WB	10 WR WG	11 EG	12
13	14 WG	15 EG	16	17 ER WG	18 EG	19
20	21 WG	22 EG	23 M	24 WR WG	25 EG	26
27	28 WG	29 EG	30	31 ER WG		

AUGUST 2025

SUNDAY	MONDAY	TUESDAY	WEDNESDAY	THURSDAY	FRIDAY	SATURDAY
					1 EG	2
3	4 WG	5 EG	6 EB	7 WR WG	8 EG	9
10	11 WG	12 EG	13 WB	14 ER WG	15 EG	16
17	18 WG	19 EG	20	21 WR WG	22 EG	23
24	25 WG	26 EG	27 M	28 ER WG	29 EG	30

### GARBAGE

- Household kitchen, office & bathroom trash
- Styrofoam

### BULKY TRASH

- Furniture
- Carpeting
- Non-metal items
- Windows/mirrors/pane glass must be taped with an "X"



### METAL

- Anything that is at least 75% metal
  - Artificial holiday trees

### RECYCLING



#### Container One:

- Newspapers & inserts
- Junk mail, envelopes, office, notebook, construction paper
- Smooth and corrugated cardboard
- Glossy magazines and catalogs
- Soft-covered books and telephone books
- Non-metallic wrapping paper & greeting cards
- Shredded paper
- Brown Grocery bags

#### Container Two:

- Food & beverage containers
- Plastic containers with a recycling code 1, 2, 5 & 7
- Aluminum cans, foil
- Aseptic packaging (ex. soup, milk containers)
- Metal cans & empty aerosol cans
- Green, clear & brown glass bottles and jars

\*\*Please note that there are 2 separate trucks that pick up recyclables.

## NEWS FROM The Allendale Green Team

Your Allendale Green Team volunteers were present at the Holiday Observers July 4 festivities helping to separate recyclables. This effort is part of our initiative to assist at all events held in the borough to reduce trash and raise awareness of sustainable practices. Thank you to the patrons and participants of the event for using the designated collection points. Thanks also to the Holiday Observers for announcing our presence and promoting sustainability. Also thank you to Andy for arranging for a separate recycling dumpster which the team filled with cardboard, bottles and cans. In the past recyclable material was not separated and went to the landfill.

### Two EPS #6 Packing Foam "Styrofoam" collections in July!

Remember only Clean, White, Dry #6 Packing Foam (It must SNAP When you bend it) No meat trays or egg cartons. No soft foam!!

- Saturday July 19 – 376 W Saddle River Rd, Upper Saddle River (USR Borough Hall)
- Saturday July 26 – 19 Industrial Park, Waldwick (Waldwick Recycling Center)

### Orange & Rockland Air Conditioner & Dehumidifier Collection - \$50 Rebate!

ORU will be collecting portable air conditioners and dehumidifiers at The Home Depot in Ramsey on Saturday July 19 from 9 AM – 12 PM.

A \$50.00 rebate check for each unit (up to 2 of each type) will be provided. An easy way to make some "cool cash" and properly recycle these items.





## Clear Out, Cash In.

### Have old room air conditioners or dehumidifiers collecting dust?

Bring them to our one-day drop-off event and earn **\$50 per unit** (limit 2 of each type) for a total of **up to \$200\***.

#### Event Details:

**Date:** Saturday, July 19, 2025

**Time:** 9 am to 12 pm

**Location:** The Home Depot, 465 Route 17, Mahwah, NJ

It's a fast, rewarding way to declutter and recycle responsibly while putting some extra cash in your pocket.

[See Details](#)

\*Get a \$50 rebate check for each unit you recycle—limit of two appliances per type. Appliances must be manufactured in 2019 or earlier and in working condition. Rebate checks will be mailed approximately six weeks after the event. To qualify, you must be a current Rockland Electric Company customer receiving electric service. Terms and conditions apply.









## WHAT IS BEECH LEAF DISEASE (BLD)?

Beech Leaf Disease is a **devastating condition** affecting beech trees.

It is caused by a microscopic worm-like nematode (*Litylenchus crenatae mccannii*) and **spreads rapidly**.

---

### SIGNS & SYMPTOMS TO WATCH FOR:

-  Dark stripes or banding between leaf veins
-  Thickened, curled, or leathery leaves
-  Canopy thinning or sparse foliage
-  Smaller leaves and premature leaf drop
-  Bud and twig dieback
-  *Symptoms often start in the lower branches and work upward.*

---

### WHERE HAS IT BEEN FOUND?



Confirmed BLD cases in NJ include:

**Bergen • Sussex • Morris • Passaic Counties**

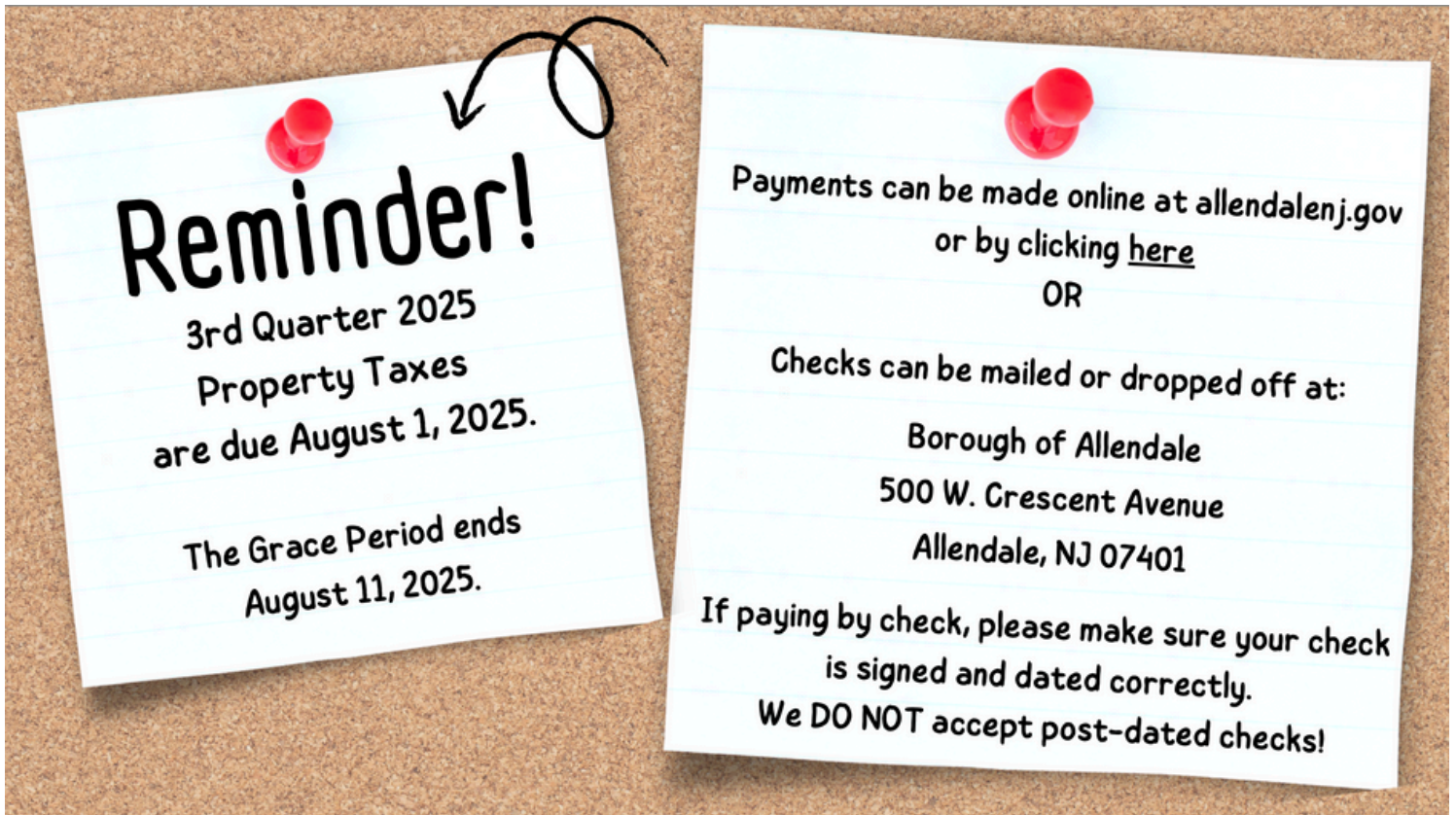
(And spreading across northern NJ)

---

### WHAT YOU CAN DO:

-  Report sightings to: **foresthealth@dep.nj.gov**  
(Include location, date, and photos)
-  Call local landscaper or nursery for treatment options





FEMA's Community Emergency Response Team (CERT) program educates citizens about disaster preparedness for hazards that may impact their area and provides training in basic disaster response skills, such as:

- Fire safety
- Light search and rescue
- Team organization
- Shelter fundamentals and management
- Disaster medical operations
- Disaster psychology

If you are interested in learning valuable skills to help family, friends, and neighbors during a disaster or emergency, consider joining Allendale's Community Emergency Response Team. You can contribute and make a difference even if you don't have a significant amount of time to volunteer. The next CERT Basic Training course is expected to be held in the fall (exact dates TBD). Classes are usually held one or two evenings per week (some in Paramus, some in Mahwah). To receive details when the training is scheduled, or for general questions about CERT, please email [allendalecertcoordinator@gmail.com](mailto:allendalecertcoordinator@gmail.com).



7

PM

LIVE

RIFF

In Concert

JULY

19th

FREE  
EVENT

**Allendale Summer Concert Series  
presents Riff Live at  
Crestwood Lake, 300 W Crescent Ave,  
Allendale, NJ**

Riff is a high energy 4-piece North Jersey band that covers rock and alt-rock music spanning several decades.

U2, The Killers, Foo Fighters, Lenny Kravitz, Blink 182, Red Hot Chili Peppers, Green Day, Gin Blossoms, Puddle of Mud, Stone Temple Pilots, Nirvana, Incubus, Goo Goo Dolls, Muse, Franz Ferdinand, Audioslave, Dishwalla, Cheap Trick, Bryan Adams, Duran Duran, Billy Idol, Radiohead, Finger Eleven, Spin Doctors, The Weekend, Eurasure, Lit, Oasis, Kings of Leon, Crowded House, INXS, Weezer, Tonic, Keane, Collective Soul, Offspring, Bush, and Queens of the Stone Age.

Made with PosterMyW

<https://riffrockband.com/>



# New Jersey's E-Bike & E-Scooter Law

E-bikes can be an exciting and fun way for kids and teens to get around—offering freedom, speed, and a taste of independence. But with that freedom comes a big responsibility: safety.

E-bikes are faster and heavier than regular bikes, which means the risks are greater too. That's why it's so important for young riders to know the rules and follow them every time they ride.

Please review these regulations and be sure your children comply to stay safe!

Visit <https://njbikeped.org> for more information.



VEHICLE TYPES	PROPULSION METHOD	POWER SOURCE	MAX ASSISTED SPEED (MPH)	LICENSE & REGISTRATION	HELMET	PARK ON THE SIDEWALK?	TAKE ON TRANSIT?
LOW-SPEED ELECTRIC SCOOTER 	Kickstart and throttle	Electric	19mph	No	Under 17 years old	If not blocking access	Yes*
LOW-SPEED ELECTRIC BICYCLE 	Pedal and optional throttle	Electric (<750W)	20mph	No	Under 17 years old	If not blocking access	Yes*
MOTORIZED BICYCLE 	Pedal and optional throttle	Gas or Electric (<50cc/<1.5BHP)	28mph	Required	Required	No	No

<http://njbikeped.org/new-law-legalized-e-bikes-and-e-scooters-in-new-jersey/>

\* Restrictions may vary by agency. PATH and NJT restrict non-collapsible vehicles during peak travel times. Bus racks have limited availability and may not fit all bikes.

## E-mobility devices make it easier to:

- Save on gas, parking, and rideshare costs.
- Access destinations without needing to walk or drive.
- Reduce carbon emissions.
- Make "first-mile" and "last-mile" connections for bus and train trips.
- Climb hills and keep up with traffic without getting sweaty.
- Help people with limitations due to age, physical fitness levels, or disabilities.

## Low-speed e-bikes and e-scooters are regulated like bicycles. Drivers of low-speed e-bikes and e-scooters:

- Must ride in the same direction as traffic and obey all traffic lights, signs, and signals.
- Are advised to wear helmets to minimize potential head injury. Helmets are required in NJ for youth under age 17.
- Must park devices without blocking pedestrian and/or wheelchair access.
- Should not ride on sidewalks. Off-road trails generally do not allow motorized bicycles, but may allow e-bikes and e-scooters. Regulations vary by municipality and county. Check all local ordinances and policies. Ride slowly in areas with pedestrians.



**RUTGERS**

Edward J. Bloustein School  
of Planning and Public Policy



**NEW JERSEY  
Safe Routes**



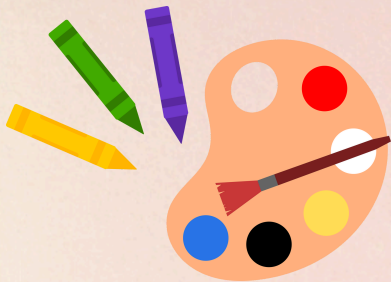
For more information, visit the NJ Bicycle and Pedestrian Resource Center at [njbikeped.org](http://njbikeped.org) or the NJ Safe Routes Resource Center at [saferoutesnj.org](http://saferoutesnj.org). 01.13.22





ALLENDALE  
community center

# SUMMER PROGRAMS



Arts &  
Crafts



Games



...and more!

## Free events for all ages this summer

Visit [allendalenj.gov](http://allendalenj.gov) for details & to register!

Registration required for some events - please check website



# ALLENDALE AMBULANCE CORPS

## Serving since 1937

**TOP  
10**

## REASONS TO BECOME AN EMT (& JOIN AVAC!)

- ✓ You love to help people
- ✓ You want to make a DIFFERENCE in someone's life – perhaps even SAVE them!
- ✓ You don't like to be bored
- ✓ You want to work with a TEAM that changes the world together.
- ✓ You want to learn valuable life skills FOR FREE!! (You do not pay for your training!)
- ✓ You want to explore if the Healthcare field is right for you
- ✓ You love to continuously LEARN
- ✓ You love to work with CARING people
- ✓ You are 16 or older – High School! College age! Moms! Dads! Grandmas! Grandpas!
- ✓ YOU HAVE KIDS (or Grandkids) and want to be able to help them if they need skilled Emergency care.

## CLASSES BEGIN AGAIN IN SEPTEMBER

**Call Daryl at 201-587-4008 for more info**

## ABOUT ALLENDALE VOLUNTEER AMBULANCE CORPS (AVAC)

*The Allendale Volunteer Ambulance Corps is a group of men and women who volunteer their time to help you in your time of need. We do NOT charge for our services! Your donations help with our general operating costs, medical supplies, and also will help us purchase a new Ambulance. Donations can be sent to:*

*Allendale Ambulance Corps  
26 Arcadia Road  
Allendale, NJ 07401*

### **DONATIONS GO TOWARDS OPERATING EXPENSES:**

*Ambulance Repairs & Upkeep 21.5%, Building & Equipment Expenses 16.8%, Medical Supplies 6.9%, Membership Retention, Training, & Compliance 21.1%, Volunteer Appreciation 19.4%, Fundraising 10%, and Administrative Costs 4.3%*



# ○ ALLENDALE WATER FESTIVAL 2025

30<sup>TH</sup>  
AUG

1 PM

CRESTWOOD  
LAKE

SNACKS | RAFFLE | CONTESTS

WATER EVENTS FOR ALL AGES!

FREE ADMISSION TO ALLENDALE RESIDENTS & GUESTS

RAIN DATE AUGUST 31ST



# Turn the Towns Teal

This September, the Allendale Woman's Club is bringing awareness to Ovarian Cancer with Turn the Towns Teal ribbons!



[allendalewomens.club](http://allendalewomens.club)



# SAVE THE DATE!

LEE  
MEMORIAL  
LIBRARY

...for Lee Memorial Library's 2nd Annual

## FAMILY DAY FUNDRAISER

Rain  
or Shine

\$10  
per person  
Children  
under 1 - Free

SEPTEMBER 13, 2025

10AM - 2PM

RED BARN, CRESTWOOD PARK

Special Performances By:

- Bubble Show Plus
- Saddle River Song
- The Magic of Conrad

Games, Kids Yoga, Arts &  
Crafts, Photo Booth,  
Food Trucks, and more!  
Fun for the whole family!

SPONSORED BY THE FRIENDS OF  
THE LEE MEMORIAL LIBRARY

Stay tuned for more information!

<https://www.leememoriallibrary.org/>



*The Allendale Chamber of Commerce Presents*

# ALLENDALE FESTIVAL DAY

Saturday, September 20, 2025

12:00 p.m. to 4:00 p.m.

West Allendale Avenue, Allendale, NJ

(Rain Date: Saturday, September 27, 2025)

**FEATURING:** Arts & Crafts • Caricatures • Clowns  
Community Organizations • Exhibits • Face Painting • Food  
Games • Giveaways • Kids' Zone • Live Music • Vendors

Many thanks to our **GENEROUS** sponsors & local organizations who make this event possible:  
Mayor Amy Wilczynski, Town Council, AFD, APD, AVAC, ADPW, & ACOC's Membership.  
Gratefully, ACOC's Board & AFD's Co-Chairs—Scott Miller, Denise Bozza, Kathryn Bleckman, & Lisa Uvanni

**DIAMOND**—The Miller Butwin Group  
of Terrie O'Connor Realtors



**PLATINUM**—Allendale Dental • Allendale Veterinary Hospital



**GOLD**—Coldwell Banker



• TD Bank



**SILVER**—J. & R. Lamb Studios • One River—Allendale • Terrie O'Connor Realtors



**ONERIVER**

**TERRIE O'CONNOR  
REALTORS**

**BRONZE**—Allendale Garden Club • Highlands Presbyterian Church • Perspire Sauna Studio  
The Gill Group

[www.allendalenjchamber.org](http://www.allendalenjchamber.org)



# A CELEBRATION IN MEMORY OF SHARON MORAN

whose dedication and spirit left a lasting  
impact on the community of Allendale



**RUN IN COSTUME!**

**HALLOWEEN FUN RUN!**

**SUNDAY, OCTOBER 19, 2025 at 9AM**

**STARTS AT THE RED BARN  
CRESTWOOD PARK, ALLENDALE, NJ**



*The McKinley Place  
Family Foundation*

**The McKinley Place Family Foundation will match  
every donation, dollar for dollar, up to \$25,000.  
Proceeds to benefit community organizations.**

**[WWW.RACEFORUM.COM/ALLENDALE5K](http://WWW.RACEFORUM.COM/ALLENDALE5K)**



## Administration, Clerks Office, Board of Health

201-818-4400

**Alison Altano, CFO & Borough Administrator**

[AlisonAltano@Allendalenj.gov](mailto:AlisonAltano@Allendalenj.gov) OR Ext. 205

**Linda L. Cervino, Clerk**

[LindaCervino@Allendalenj.gov](mailto:LindaCervino@Allendalenj.gov) OR Ext. 216

**Amanda Richards, Administrative Assistant  
& Health Department Secretary**

[AmandaRichards@Allendalenj.gov](mailto:AmandaRichards@Allendalenj.gov) OR Ext. 218

**Dottie Blitzer, Administrative Assistant**

[DottieBlitzer@allendaleNJ.gov](mailto:DottieBlitzer@allendaleNJ.gov) OR Ext. 214

**Julia Margagliotta, Director of Communication**

[JuliaMargagliotta@Allendalenj.gov](mailto:JuliaMargagliotta@Allendalenj.gov)

## Vital Statistics Records

Marriage Licenses, Death & Birth Certificates

**Northwest Bergen Regional Health Commission**

201-445-7217

## Building Department, Land Use, Property Maintenance

**Anthony Hackett, Construction Official**

[CodeOfficial@Allendalenj.gov](mailto:CodeOfficial@Allendalenj.gov) OR Ext. 208

**Linda Garofalo, Land Use Administrator**

[LindaGarofalo@Allendalenj.gov](mailto:LindaGarofalo@Allendalenj.gov) OR Ext. 201

**Mike Limatola, Property Maintenance Officer**

[MikeLimatola@allendalenj.gov](mailto:MikeLimatola@allendalenj.gov) OR Ext. 202

## Department of Public Works

**Andrew J. Agugliaro, Superintendent**

[AndrewAgugliaro@Allendalenj.gov](mailto:AndrewAgugliaro@Allendalenj.gov) OR Ext. 501

**Kim Olivieri, Administrative Assistant**

[KimOlivieri@Allendalenj.gov](mailto:KimOlivieri@Allendalenj.gov) OR Ext. 213

## Tax & Finance Office

**Gina Wittmaack, Tax Collector**

[GinaWittmaack@Allendalenj.gov](mailto:GinaWittmaack@Allendalenj.gov) OR Ext. 206

**Angela Mattiace, Tax Assessor**

[AngelaMattiace@Allendalenj.gov](mailto:AngelaMattiace@Allendalenj.gov) OR Ext. 210

## Allendale Municipal Court

**Rose Novelli-Salyer, Court Administrator**

[novellir@ho-ho-kusboro.com](mailto:novellir@ho-ho-kusboro.com) OR 201-652-0699





## Mayor & Council

### **Amy Wilczynski, Mayor**

[AmyWilczynski@AllendaleNJ.gov](mailto:AmyWilczynski@AllendaleNJ.gov)

### **Liz Homan, Council President**

[LizHoman@AllendaleNJ.gov](mailto:LizHoman@AllendaleNJ.gov)

Co-Chair - Public Works & Public Utilities Committee  
Member of Finance, Human Resources, Administration &  
Information Technology Committee

### **Matt O'Toole**

[MatthewOTOole@AllendaleNJ.gov](mailto:MatthewOTOole@AllendaleNJ.gov)

*Chair – Public Safety Committee*

### **Joseph Daloisio, Councilman**

[JosephDaloisio@AllendaleNJ.gov](mailto:JosephDaloisio@AllendaleNJ.gov)

*Chair – Public Works & Public Utilities Committee*  
*Member of Public Safety Committee*

### **Susanne Lovisolo, Councilwoman**

[SusanneLovisolo@AllendaleNJ.gov](mailto:SusanneLovisolo@AllendaleNJ.gov)

*Chair – Land Use & Construction Code Committee*  
*Member of Finance, Human Resources, Administration &*  
*Information Technology Committee*

### **Ed O'Connell, Councilman**

[EdwardOConnell@AllendaleNJ.gov](mailto:EdwardOConnell@AllendaleNJ.gov)

*Member of Facilities, Parks and Recreation Committee*

### **Tyler Yaccarino, Councilman**

[TylerYaccarino@AllendaleNJ.gov](mailto:TylerYaccarino@AllendaleNJ.gov)

*Chair – Facilities, Parks and Recreation Committee*  
*Member of Land Use & Construction Code Committee*

 [CLICK HERE](#)  
TO SIGN UP FOR  
FUTURE  
NEWSLETTERS,  
BOROUGH EMAILS  
& POLICE ALERTS

*Thank you for reading!*



[@AllendaleNJBorough](https://www.facebook.com/AllendaleNJBorough)

[www.allendalenj.gov](http://www.allendalenj.gov)