



# THE BOROUGH OF ALLENDALE

## *Happenings* APRIL 2021

A monthly electronic newsletter  
to keep residents informed.  
Please encourage friends and  
neighbors to sign up for Constant  
Contact by [Clicking Here](#)



**Ari Bernstein**  
Mayor

### A message from Mayor Bernstein. . .

In this edition of our Allendale Happenings, we share updates on some of the projects in town. Our Police and Fire Departments give some great safety tips and information for you and your family. And our Board of Health continues to share information on the latest with COVID-19 and vaccinations.

On the topic of vaccinations, I recently announced that the Borough of Allendale, through working with public and private partnerships, can now help facilitate the scheduling of COVID-19 vaccines for our at-risk residents. This is exciting news and a great opportunity! Please take advantage of it. Furthermore, if you know seniors in Allendale who have not yet been vaccinated, please share this information with them and help them take advantage of this opportunity.

If you are 65 years of age or older and have not been able to schedule a COVID-19 vaccination, please contact the Borough at [healthdept@Allendalenj.gov](mailto:healthdept@Allendalenj.gov). Please include the following information in your email:

Name:

Address:

Date of Birth:

Phone:

Email:

On the financial front, Allendale has been notified that under the recently passed American Rescue Plan, Allendale is eligible to receive approximately \$661,000 in federal assistance. We are awaiting more information on how exactly we can utilize these monies, including whether it can be used to offset a projected tax increase. Our Finance Committee is working diligently on this issue and will share with you any updates as soon as we are informed.

As we turn the season to Spring, I am excited about our future here in Allendale. The fields are being groomed and prepped for spring sports, our DPW is working on Crestwood Lake, and the Compost Center will be open starting on April 10th. All of this is good news.

I look forward to a full season at Crestwood Lake with the opening of our bandshell and the new playground. I also look forward to more outdoor dining events in the Spring and Summer to help and continue to support our local restaurants.

Have a great April, Allendale!

**Liz Homan**  
Council President

**Ed O'Connell**  
Councilman

**Matt O'Toole**  
Councilman

**Steve Sasso**  
Councilman

**Jim Strauch**  
Councilman

**Amy Wilczynski**  
Councilwoman

*Get In Touch. . . Stay Connected. . .*  
[WWW.ALLENDALENJ.GOV](http://WWW.ALLENDALENJ.GOV)



# GARBAGE & RECYCLING REMINDERS

● West Garbage    ● West Bulk    ● West Recycling    ● Metal  
● East Garbage    ● East Bulk    ● East Recycling

## April 2021

Sunday	Monday	Tuesday	Wednesday	Thursday	Friday	Saturday
				1 ER	2	3
4	5 WG	6 EG	7 EB	8 WR	9	10
11	12 WG	13 EG	14 WB	15 ER	16	17
18	19 WG	20 EG	21	22 WR	23	24
25	26 WG	27 EG	28 M	29 ER	30	

- All items should be put out *starting at 6pm the night before* the scheduled collection.
- Wood pallets are not collected by our garbage contractor. You must make your own arrangements to dispose of them.
- You must schedule a one-time, courtesy move-out pickup with [TatianaMarquis@AllendaleNJ.gov](mailto:TatianaMarquis@AllendaleNJ.gov) at *least 3 WEEKS in advance*.
- Remember to make sure that the lids are securely on top of your cans, especially garbage. This will help keep wildlife at bay.
- Collection containers can be no larger than 30 gallons.
- Bulk Trash must be placed on the curb and **not placed** in the road.
- Food containers being recycled need to be rinsed and cleaned before you dispose.
- Soiled pizza boxes are garbage and **NOT** recyclable.

### GARBAGE

- Household kitchen, office and bathroom trash
- Styrofoam

### BULKY TRASH

- Furniture
- Carpeting
- Non-metal items
- Windows/mirrors/pane glass must be taped with an "X"
- Artificial Holiday Trees

### METAL

- Anything that is least 75% metal



### RECYCLING

#### Container One:

- Newspapers and inserts
- Junk mail, envelopes, office, notebook, construction paper
- Smooth and corrugated cardboard
- Glossy magazines and catalogs
- Soft covered books and telephone books
- Non-metallic wrapping paper and greeting cards
- Shredded paper
- Brown grocery bags

#### Container Two:

- Food and beverage containers
  - Plastic containers with a recycling code 1, 2, 5, 7
  - Aluminum cans, foil
  - Aseptic packaging (ex: soup, milk containers)
  - Metal cans and empty aerosol cans
  - Green, clear and brown glass bottles and jars
- \*\* Please note that there are 2 separate trucks that pick up recyclables.



THE BOROUGH OF  
**ALLENDALE**

# 2021

# COMPOST PERMIT

**THE 2021 COMPOST PERMITS ARE  
AVAILABLE FOR PURCHASE**

PERMITS COST \$30.00 APPLICATIONS CAN BE FILLED OUT ONLINE AT

**[WWW.ALLENDALENJ.GOV](http://WWW.ALLENDALENJ.GOV)**

**The Clerk's Office will contact you to coordinate  
payment & pickup of your permit**

**THE COMPOST SITE WILL REOPEN  
APRIL 10<sup>TH</sup>, 2021**

**HOURS: APRIL 10, 2021 - DECEMBER 12, 2021**

**SATURDAY: 9:00AM TO 3:00PM**

**SUNDAY: 9:00AM TO 1:00PM**

# Recycling Center & Compost Site

*Hours of Operation Starting April 10<sup>th</sup>*

**SATURDAYS** from 9:00 am until 3:00 pm

**SUNDAYS** from 9:00 am until 1:00 pm

*Residents Must Have a Permit - No Landscapers Permitted*



**BERGEN COUNTY**  
UTILITIES AUTHORITY

## 2021 Household Hazardous Waste (HHW)

**Bergen Community College**

**400 Paramus Rd., Paramus**

**Saturday, May 15, 2021**

*HHW event collection hours are 9:00 a.m. - 3:00 p.m. (rain or shine)*

## 2021 Document Shredding, Electronics Recycling and Tire Recycling

**Bergen Community College**

**400 Paramus Rd., Paramus**

**Sunday, April 25, 2021**

*Collection Hours*

*9:00 a.m. - 2:00 p.m. (rain or shine)*





### COVID-19 VACCINE LOCATIONS FOR ELIGIBLE RECIPIENTS

You can [register for a vaccine on the NJ Vaccine Scheduling System](#) and you will be notified when an appointment is available to you in the system.

If you are eligible but have not yet been notified about available appointments in the NJ Vaccine Scheduling System, you may also make an appointment directly with many of the designated vaccination sites across the state listed in the spreadsheet at the link below.

Please note that this spreadsheet includes both locations that can be contacted directly as well as locations that are only available for appointments through the NJ Vaccine Scheduling System - these sites list <https://covidvaccine.nj.gov/> as the Facility Website.

**List of Vaccine Locations & Registration Links - [CLICK HERE](#)**  
**NJ COVID-19 Find Vaccine Appointments (BETA) - [CLICK HERE](#)**

### ALLENDALE ANNOUNCES SENIOR COVID-19 VACCINATION SCHEDULING ASSISTANCE

The Borough of Allendale is pleased to announce that, through working with public and private partnerships, can now help facilitate the scheduling of COVID-19 vaccines for our at-risk residents. If you are 65 or older, and have not been able to schedule a COVID-19 vaccination, contact the Borough at [HealthDept@Allendalenj.gov](mailto:HealthDept@Allendalenj.gov) – please include the following - Name, Address, Date of Birth, Phone, Email.

The Borough is working with certain healthcare facilities to assist in the scheduling of vaccine appointments for our seniors. This is exciting news and a great opportunity. Please take advantage of it. Furthermore, if you know seniors who have not yet been vaccinated, please share this information with them and help them take advantage of this great opportunity.

### STAYING UP TO DATE:

Stay up to date with the latest information on COVID-19:

**Allendale COVID-19 Information Hub:** <https://allendalenj.gov/covid-19-information/>

**New Jersey COVID-19 Information Hub:** <https://covid19.nj.gov/>

**Bergen County's COVID-19 Information:** <https://www.co.bergen.nj.us/health-promotion/2019-novel-corona-virus>

Testing also available at Bergen New Bridge Medical Center. Register at [newbridgehealth.org](https://newbridgehealth.org).

The County of Bergen in Partnership  
with Bergen New Bridge Medical Center announce

# Regional Community Drive-Thru COVID-19 Testing

Hosted by

**Bergen Community College- Lot A**  
**400 Paramus Road, Paramus, NJ**

## UPCOMING DATES

Monday, March 29<sup>th</sup>

Tuesday, April 6<sup>th</sup>

\*Wednesday, April 14<sup>th</sup>

Tuesday, April 20<sup>th</sup>

\*Wednesday, April 28<sup>th</sup>

\*Wednesday, March 31<sup>st</sup>

Thursday, April 8<sup>th</sup>

Saturday, April 17<sup>th</sup>

Thursday, April 22<sup>nd</sup>

Saturday, May 1<sup>st</sup>

**\*PLEASE NOTE WEDNESDAYS WILL OPERATE 8:30AM-1PM\***

**Check-in begins at 8AM**  
**Testing begins promptly from 8:30AM-12PM**

**COVID-19 Nasopharyngeal  
Diagnostic PCR Test**

Results available in 48 hours.

### Bring:

- ✓ **Identification**  
(driver's license/ID card, social security card, passport or birth certificate)
- ✓ **Proof of Bergen County Residency, School ID, or Employment with Municipal or County government**  
(copy of lease, driver's license, utility bill, work ID)
- ✓ **Insurance card, if applicable**

### Registration:

- No walk-ups available
- You **MUST PRE-REGISTER!**
- To register, please visit:  
[BergenCovidTesting.com](https://BergenCovidTesting.com)



**ALL MOBILE TESTING SITES ARE WEATHER PERMITTING**

In case of inclement weather, please visit [www.co.bergen.nj.us](https://www.co.bergen.nj.us) for updates.



NOW, MORE THAN EVER, IT'S IMPORTANT TO STAY VIGILANT IN THE FIGHT AGAINST COVID-19

WEAR A MASK

WASH YOUR HANDS & AVOID CONTACT WITH YOUR FACE

KEEP SOCIAL DISTANCE

Wearing a mask in public

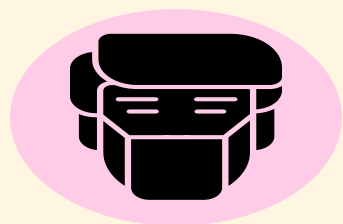


helps reduce the spread of germs.



We should **ALL** wear a cloth or disposable mask to protect each other.

Even if you don't feel sick, germs can spread to others through respiratory droplets produced by breathing, talking, sneezing and coughing.



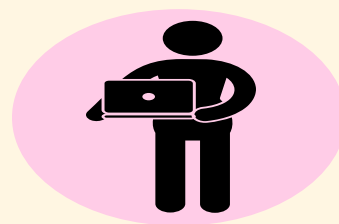
### 1. Wear Mask Correctly

- Make sure you can breathe through it
- Your nose and mouth should be covered
- Masks should not be placed on children under 2 years old or people who have trouble breathing



### 2. Maintain Healthy Habits

- Wash a cloth mask after use
- Avoid contact with sick people
- Wash hands often with soap and water; use hand sanitizer with at least 60% alcohol if soap and water aren't available



### 3. Keep Social Distancing

- Masks do not replace social distancing
- You may be sick (carrying germs) and not even know
- Masks + social distancing = less community spread of disease



<https://covid19.nj.gov/>



**Questions?** Call 2-1-1 or text NJCOVID to 898-211



# Water Committee Updates

Please take the time to understand your tap water. The Water Committee has hosted three virtual Community Meetings on Water. They are all available to be viewed by going to the Borough Web site- WATER page. Should you have any questions please contact Liz Homan. Her email is [lizhoman@allendalenj.gov](mailto:lizhoman@allendalenj.gov)

## Topics Covered:

- 💧 1st Allendale Water Community Meeting:  
**Overview of Allendale Water ([Click Here to Watch](#))**
- 💧 2nd Allendale Water Community Meeting:  
**Emerging Contaminants and Economics of Allendale Water ([Click Here to Watch](#))**
- 💧 3rd Allendale Water Community Meeting:  
**Options for the Future of Allendale Water ([Click Here to Watch](#))**

As part of it's responsibility, the Water Committee has to explore all viable options for the future of Allendale water. A resolution was presented and passed at the March 25, 2021 Mayor and Council meeting to provide approval for the Borough to undertake a procurement process to obtain bids for the possible sale of the System to a public or private entity. Should the Water Committee and the Mayor and Council find any of the offers worthy of consideration by the residents of Allendale, the offer will be discussed at a public meeting(s) and will be subject to a vote during the General Election in November. Should any residents have questions, please contact Liz Homan via e-mail, [lizhoman@allendalenj.gov](mailto:lizhoman@allendalenj.gov)



# THE BOROUGH OF **ALLENDALE**

## **THE YEARLY HYDRANT FLUSHING PROGRAM IS SCHEDULED TO START ON APRIL 5, 2021**

Suez Water will be conducting hydrant testing and flushing throughout town over the next few weeks. Flushing will occur during the hours of 8:00 am through 3:00 pm. We request that customers use **minimal** water during the flushing in their area to avoid the possibility of drawing sediments into the household plumbing. We regret any inconvenience the flushing program may cause you. If you have any questions or would like more information please contact Suez Water at 855-367-6708

[Zone 1](#) – Anticipated Start Date 4/05, Anticipated Completion Date 4/14

[Zone 2](#) – Anticipated Start Date 4/14, Anticipated Completion Date 4/22

[Zone 3](#) – Anticipated Start Date 4/22, Anticipated Completion Date 5/04

[Zone 4](#) – Anticipated Start Date 5/04, Anticipated Completion Date 5/13

[Zone 5](#) – Anticipated Start Date 5/13, Anticipated Completion Date 5/21

**County Roads (Franklin Turnpike, Forest Rd., E. Allendale Ave.) - 3 Days 5/21 to 5/25**

***Please note that these dates are tentative and subject to change.***

To cleanse the system, Suez Water systematically open our fire hydrants to increase water flows – allowing us to “flush” any minerals and deposits from the pipes. While flushing the system won’t interrupt your water service, when crews are working in your area, you may notice a temporary drop in water pressure or discolored water. This is discoloration is normal. If you are experiencing any discolored water simply let your water run until it is clear.

### **Customer Tips:**

- Avoid running your tap water and using the washing machine or dishwasher while crews are flushing in your area.
- If discolored water occurs, simply run the cold water for a few minutes until it clear. This will allow the sediment to work its way through your pipes.
- Check for discolored water before using the washing machine or dishwasher. Wait until the water runs clear at the tap before doing laundry or running the dishwasher. NOTE: If your laundry becomes stained, DO NOT PUT YOUR LAUNDRY IN THE DRYER. Rewash clothes immediately using detergent and add a rust remover. Most rust removers can also be used on stained fixtures.

In some cases, slight discoloration might linger for a few hours. This discoloration only affects the appearance of the water and does not affect water quality. No health hazards are associated with discolored water from hydrant flushing.

If water pressure or water volume seems low after flushing has been completed, check your faucet screens for trapped particles.

# Project Updates...

## 220/230 West Crescent Ave.

The Borough is working through legal documents, approvals, and plans to close on 230 West Crescent Ave (warehouse) by May. The plan for the warehouse is to divide it into 4 smaller storage facilities. The front portion of the property at 220 West Crescent will most likely close sometime in June. We are currently reviewing the details of the architectural plans and are in the process of obtaining the best pricing. If all goes as planned, construction on the residential units and municipal facility will start in the fall.

## Playground

The playground construction will be starting soon! We will be replacing the older equipment with new equipment. We will also be installing new rubber mulch and a new fence to upgrade the entire area. This project was funded with a Bergen County Open Space Grant with an anticipated completion date of Memorial Day.



## Crestwood Lake



Allendale, NJ

## Crestwood Lake

We plan on opening registration for Crestwood Lake by May 3<sup>rd</sup>. Be on the lookout for a special Crestwood Newsletter. The borough wants to once again thank all the residents for their patience and cooperation that contributed to a successful 2020 season in challenging times. Everyone was respectful and worked together to make it a great year for members. We will once again open this year with all appropriate guidelines in place to ensure the safety of our residents and staff.

## September 11 Memorial Pavers

When Allendale created our 9/11 memorial and then acquired a steel artifact from the WTC, we initiated a paver program so residents could be a part of the memorial, pay tribute to loved ones, and the sentiment and memory of that day. To mark the 20 year anniversary of the attacks on September 11, we would like to provide an opportunity for residents to once again purchase pavers and be a part of our beautiful 9/11 memorial. If you are interested, please fill out the form [CLICK HERE](#) and return it by JULY 15.



# Allendale Town-Wide Garage Sale

**Saturday, May 15th  
9am to 4pm**

*(Rain date: Sunday, May 16th)*

**Requested by popular demand, the AWC heard you! Get your spring cleaning on!**

Dig out those unwanted treasures hidden away in your attic, basement, closets, and garage to get ready for the Allendale Town-Wide Garage Sale! For a \$30.00 fee you hold your own garage sale at your home, individual townhouse or condo within Allendale (no town permit required).

- Your address will be included on a map provided to bargain seekers on the day of the sale.
- You will receive a distinctive garage sale marker for your house or condominium or townhouse.
- You get loads of free advertising for your garage sale!

For more information, email Molly at [mkisselpatrick@gmail.com](mailto:mkisselpatrick@gmail.com) or call Molly Kissel Patrick at 201-925-0254, or visit the Allendale Woman's Club website at [www.allendalewomensclub.org](http://www.allendalewomensclub.org).

To register, return w/your payment to: Allendale Womans Club, 100 Elmwood Ave, Allendale, NJ 07401

Name: \_\_\_\_\_

Street Address: \_\_\_\_\_

Phone Number: \_\_\_\_\_ Email (important!): \_\_\_\_\_

Type of items: \_\_\_\_\_

**Please make your check payable to: Allendale Woman's Club.** The non-refundable fee of \$30.00 must be received no later than May 11<sup>th</sup> to ensure inclusion on the map.

Please be advised that the distribution of this material does not constitute approval, sponsorship or endorsement of content, ideas or events included therein by the Allendale Board of Education. The Allendale Board of Education neither endorses nor sponsors the organization or activity represented in this document. The distribution of this material is provided solely as a community service.



# ALLENDALE FIRE DEPARTMENT



**WHEN YOUR CARBON MONOXIDE OR SMOKE ALARM GOES OFF CALL 911 IMMEDIATELY AND EVACUATE THE HOUSE! LET US INVESTIGATE THE CAUSE AND DETERMINE THAT YOU AND YOUR FAMILY ARE SAFE TO RETURN!**

## Red Flag Warning

Be extremely careful with open flames.

The NWS issues a Red Flag Warning, in conjunction with land management agencies, to alert land managers to an ongoing or imminent **critical fire weather** pattern.

Critical fire conditions are ongoing/expected to occur within the **next 24 hours**.

## Take action.

[weather.gov/fire](https://weather.gov/fire)



## THE ALLENDALE FIRE DEPARTMENT IS ALWAYS LOOKING FOR NEW MEMBERS!

**WE ARE IN NEED OF MEMBERS TO CONTINUE TO SERVE THE COMMUNITY!**

If you are between the ages of 16 and 18, you are eligible to join as a Junior Member.

Anyone 18 years or older is eligible to join the active department.

**ANYONE INTERESTED IN JOINING EMAIL: [firechief@allendalenj.gov](mailto:firechief@allendalenj.gov)**



# ALLENDALE POLICE DEPARTMENT

## COMMUNITY CAMERA PARTNERSHIP

Many business owners and residents currently operate surveillance systems at their businesses and/or homes. As crimes occur nearby, they are not always aware that their system may have captured information that could help solve the crime, thus keeping our community safer. In turn, the police are also not always aware who may have this potentially vital information.

The Allendale Police Department is asking residents and businesses in the Borough to voluntarily register their privately owned surveillance camera systems. As we respond to criminal incidents, we may be able to use the information or footage gathered from the security cameras to assist in the apprehension and prosecution of the criminals involved.

To register your camera [CLICK HERE](#). Information provided to the Police Department regarding your camera system is for official use only. Personal information will remain confidential except as required by law.

## ALARM REGISTRATION

The Allendale Police Department wishes to remind residents and business owners that Borough Ordinance 82-5 requires that you register your alarm annually. To do so, complete the Allendale Police Information Form (this information is for police department use only) and the Alarm Registration Form provided. There are two formats available, a PDF Fillable Form which can be completed on your computer, or a Standard Form to be downloaded and completed with a pen. Both forms must be filled out and mailed or dropped off at police headquarters. The fee is \$25 per year. Please [CLICK HERE](#) and complete your form today.

## LOCK CAR DOORS

All residents are urged to take additional precautionary measures to ensure the safety of their property. Here are some crime prevention tips:

- Lock all your vehicle's doors even if you only plan to be away for a brief period of time.
- Do not leave valuables in your car. Firearms, computers, purses, and wallets are highly desired targets that are frequently stolen.
- Do not leave any "sign" that there might be valuables out of sight in your vehicle, such as docking stations, phone chargers or connector cables.
- Very few larcenies from motor vehicle incidents are random. Thieves see something in plain sight that is valuable and they can quickly steal. Leave nothing in plain sight that might make your vehicle worth investigating by a thief, not even loose coins.
- Thieves often use flashlights to see through tint. Do not think your dark tinted windows will hide your valuables.

## **TRAIN PARKING PERMITS \*\*\* NEW TRANSIT PARKING INFORMATION\*\*\***

Park and Ride permits for the New Jersey Transit lots expired Tuesday September 1, 2020. Applications for permits and renewals are now available on-line only at the Borough's website ([CLICK HERE](#)) Complete the application and mail your payment to police headquarters. Please pay by check or exact change cash (if coming in person). Once we receive your application and payment we will mail your permit back to you. Permit fees for April 1, 2021 to August 31, 2021 will be \$60.00 for resident parking and Non-Resident permits are \$225.00 including NJ Sales Tax.

## **DISPLAY OF NUMBERS.**

We are seeing that many homes do not have posted or have not replaced proper numbers on the home or business and is making it more difficult for first responders and delivery companies to find the correct location because lack of numbers. The Borough Ordinance says:

### **§ 104-4 Display of numbers.**

It shall be the duty of the owner or occupant of every house or building in said Borough to display the street number of such house or building and to keep and maintain the same at his or her expense, in good, legible condition, in a conspicuous place upon the front of such house or building, and the size of the digits shall not be less than four inches.

### **§ 104-5 Violations and penalties.**

A.

Any such person or persons aforesaid who shall fail to properly display the number of any such house or building in said Borough or fail to repair or renew such number when required so to do by the provisions of this chapter, after 30 days' notice in writing from the Borough Clerk that such number shall be displayed or is in need of repair or renewal, shall be subject to a penalty of \$5.

B.

All fines imposed under this chapter are for revenue.



Thunderstorms can occur any time of year in New Jersey. However, severe thunderstorms generally occur during the warmer months of March through October.

A typical thunderstorm is 15 miles in diameter and lasts an average of 30 minutes - far smaller than a hurricane or a winter storm. Despite their small size, however, ALL thunderstorms are dangerous.

Thunderstorms can produce lightning, tornadoes, strong winds, flash flooding, and hail.

Lightning occurs with all thunderstorms. Each year, lightning causes an average of 67 fatalities nationwide. Many more are injured but survive with long-term, debilitating symptoms including memory loss, sleep disorders, and muscle spasms.

There are lightning detection alarms in borough fields and at Crestwood Lake. Once lightning is detected within a close radius to the detector, an alarm sounds along with a flashing strobe light. Upon hearing the alarm and/or observing the strobe light flashing, seek shelter immediately. When lightning no longer exists in this radius, an "All Clear" signal will sound and the strobe light will stop flashing. For more information on how to protect yourself and others from lightning, please visit <http://ready.nj.gov/plan-prepare/thunderstorms-lightning.shtml> or contact Allendale Office of Emergency Management Coordinator Michael Dillon at [oemdirector@allendalenj.gov](mailto:oemdirector@allendalenj.gov)



# Quick Notes...

[Bergen County Mental Health & Community Support Resources](#)

For **Non-Emergency Notifications** please register to receive updates from [Constant Contact](#)

For **Emergency Notifications** please register to receive updates from [SWIFTREACH](#)

**MOVING OUT?**  
For your final water bill contact



at  
**855-367-6708**

## PLEASE BE A GOOD NEIGHBOR



## CLEAN UP AFTER YOUR DOG

[CLICK HERE FOR ORDINANCE](#)

Allendale/Saddle River  
**Rotary**  
Club



### SAVE THE DATE

THURSDAY, JUNE 3, 2021  
RED BARN AT CRESTWOOD LAKE  
6:30 PM

Join The Allendale/Saddle River Rotary Club for  
our first outdoor fundraising event in over a year!  
We invite you to come show your support and enjoy  
time with your friends as we fundraise for:

Gift of Life | Local Scholarships | Community Outreach  
and much more!

CONTACT MAUREEN FOR MORE INFORMATION AND TICKETS.  
201.248.8240 | [MHMAMUNES@YAHOO.COM](mailto:MHMAMUNES@YAHOO.COM)  
A DONATION OF \$40 INCLUDES YOUR TICKET AND LIGHT FOOD.

Get Applications and Registration Forms  
ONLINE at [www.allendalenj.gov](http://www.allendalenj.gov)  
Under Forms/Licensing/Permits tab

- Compost Permits
- Construction Permits
- Garage Sale Permits
- Dog & Cat Licenses
- Report a Concern
- Red Barn, West Beach & Field Use Requests
- Open Public Records Requests
- No Knock Permits
- Train Station Parking Permits
- Property Maintenance Complaints

## Senior Freeze Property Tax Reimbursement

The NJ Division of Taxation began mailing the 2020 Senior Freeze Property Tax Reimbursement applications to eligible senior citizens and disabled residents the week of February 15, 2021. The deadline for filing applications is November 1, 2021.

In order to receive a Verification of 2020 Property Taxes, please call or email our office [ginawittmaack@allendalenj.gov](mailto:ginawittmaack@allendalenj.gov) and phone number with (201) 818-4400 ext. 206

If you have any questions about the Senior Freeze Program, please call:

- To ask questions or to order an application: 1-800-882-6597
- To check the status of a filed application: 1-800-882-6597
- To listen to information: 1-800-323-4400
- Assistance at [Taxation Regional Information Centers](#)
- For details and to [check eligibility online](#)

## Annual Reassessment Program

The 2021 Reassessment has now been completed. Residential and Commercial informal reviews concluded as of Monday, March 29, 2021. All Hearing Review Letters were mailed by Friday, April 2, 2021. Any property owner who may wish to contest the 2021 Assessment for their property may file a petition of appeal with the Bergen County Board of Taxation by May 17, 2021. Petitions may be filed on-line directly with the Bergen County Board of Tax at: [www.taxappeal-nj.com](http://www.taxappeal-nj.com). You may also contact the Bergen County Board of Taxation at (201) 336-6300 to obtain a petition of appeal.

## REMINDER

**2nd Quarter 2021 Property Taxes are due May 1, 2021  
The Grace Period ends May 10, 2021**

Payments can be made online at [allendalenj.gov](http://allendalenj.gov)  
or

Checks can be mailed or dropped off at the  
Borough of Allendale  
Attn: Tax Office  
500 W. Crescent Avenue  
Allendale, NJ 07401

***If paying by check, please make sure your check is signed  
and dated correctly. We do not accept post-dated checks!***

# **Mayor & Council Corner**

## **Mayor & Council Virtual Meetings**

**Thursday, April 15<sup>th</sup> at 7:30pm**

**Thursday, April 29<sup>th</sup> at 7:30pm**

To join the meeting from your computer, tablet or smartphone.

<https://global.gotomeeting.com/join/302918517>

You can also dial in using your phone.

Phone Number: (872) 240-3212

Access Code: 302-918-517

New to GoToMeeting? Get started by clicking below.

<https://global.gotomeeting.com/install/302918517>



**ADMINISTRATIVE OFFICES REMAIN CLOSED TO THE PUBLIC, HOWEVER, WE ARE WORKING. PLEASE REACH OUT IF WE CAN BE OF ASSISTANCE.**

**BOROUGH PHONE NO. (201) 818-4400**

***ADMINISTRATION, CLERK'S OFFICE,  
BOARD OF HEALTH, & TAX ASSESSOR'S OFFICE***

**Ron Kistner, Administrative Officer**

RonKistner@AllendaleNJ.gov OR Ext. 501

**Michelle Ryan, Acting Clerk**

MichelleRyan@AllendaleNJ.gov OR Ext. 216 & 200

**Tatiana Marquis, Deputy Clerk**

TatianaMarquis@AllendaleNJ.gov OR Ext. 218

**John Gil, Director of Communication**

JohnGil@AllendaleNJ.gov OR Ext. 211

**Angela Mattiace, Tax Assessor**

AngelaMattiace@AllendaleNJ.gov OR Ext. 210

***VITAL STATISTICS RECORDS***

Northwest Bergen Regional Health Commission 201-445-7217

***BUILDING DEPARTMENT***

Technical Assistant 201-818-4400 x201

**Anthony Hackett, Construction Official**

CodeOfficial@AllendaleNJ.gov OR Ext. 208

***LAND USE, ENGINEERING, & PROPERTY MAINTENANCE***

**Linda Garofalo, Land Use Administrator**

LindaGarofalo@AllendaleNJ.gov OR Ext. 212

***TAX & FINANCE OFFICE/WATER PAYMENTS***

**Alissa Mayer, CFO & Water Collector**

AlissaMayer@AllendaleNJ.gov OR Ext. 205

**Gina Wittmaack, Tax Clerk**

GinaWittmaack@AllendaleNJ.gov OR Ext. 206

***LEE MEMORIAL LIBRARY***

aldlcirc@bccls.org OR 201-327-4338

***ALLENDALE MUNICIPAL COURT***

**Rose Novelli-Salyer, Court Administrator**

novellir@ho-ho-kusboro.com OR 201-652-0699

## ***MAYOR & COUNCIL***

**Ari Bernstein, Mayor**

AriBernstein@AllendaleNJ.gov

**Liz Homan, Council President**

LizHoman@AllendaleNJ.gov

*Water, Sewer & Public Utilities Committee*

**Ed O'Connell, Councilman**

EdwardOConnell@AllendaleNJ.gov

*Public Safety Committee*

**Matt O'Toole, Councilman**

MatthewOTOole@AllendaleNJ.gov

*Administration, Finance & Human Resources Committee*

**Steve Sasso, Councilman**

SteveSasso@AllendaleNJ.gov

*Land Use & Construction Code Committee*

**Jim Strauch, Councilman**

JimStrauch@AllendaleNJ.gov

*Public Works Committee*

**Amy Wilczynski, Councilwoman**

AmyWilczynski@AllendaleNJ.gov

*Facilities, Parks & Recreation Committee*

*Get In Touch. . . Stay Connected. . .*  
**WWW.ALLENDALENJ.GOV**



**@ALLENDALENJBOROUGH**