



THE BOROUGH OF ALLENDALE

Happenings MARCH 2021

A monthly electronic newsletter
to keep residents informed.
Please encourage friends and
neighbors to sign up for Constant
Contact by [Clicking Here](#)



A message from Mayor Bernstein. . .

Unfortunately, Bergen County is presently in the high-risk category for COVID-19. Additionally, the numbers are slightly on the rise in Allendale. At the end of February, out of an abundance of caution, our Borough Hall was closed for 2 days due to some potential exposures. All Borough Hall staff worked remotely during that time. Thankfully, I am happy to report everyone is healthy and Borough Hall has reopened, but I cannot stress enough to everyone how important it is that we all remain vigilant. As such, and we have been saying this from day one, it is so important, especially now since we are so close to hopefully seeing this pandemic behind us, to continue wearing masks, even outdoors, maintaining a social-distancing and washing our hands.

We know that one of the challenges of the vaccine rollout has been technological hurdles to make appointments for some of our residents, especially our seniors. At the end of January, the State of New Jersey set up a call center to serve these residents. Unfortunately, on February 10th, the call center's ability to take those reservations was halted due to an apparent lack of training that resulted in mistakes in booking appointments. At our last council meeting, we passed a resolution calling on the Governor to allocate appropriate resources and training so that this hotline can again serve our community, especially our most vulnerable. I want to thank the members of the Council for their support on this important resolution that will be sent to the Governor.

On a positive note, our nation received encouraging news recently that Johnson & Johnson has been given approvals for their COVID-19 vaccination to begin being administered. We are hopeful that these vaccines will make their way to New Jersey's and Allendale's residents soon. We continue to reach out to the County to offer Allendale as a distribution site for the vaccine. Unfortunately, the County has not accepted our offer yet, but we will continue our efforts and look into other avenues to help our residents get access to vaccines. Please stay posted for more information as we continue to look for ways to get all of our residents vaccinated.

I am also pleased to report that Bergen County Executive Jim Tedesco and the Board of Commissioners have announced that the County has partnered with EZ RIDE to provide seniors age 60 and over with rides for COVID-19 vaccinations at Bergen New Bridge Medical Center. Rides will be provided through companies such as Lyft and Uber under a program known as Ryde4Life, which is part of the EZ Ride network. The program will be coordinated through the Bergen County Division of Community Transportation and the Division of Senior Services that will work together to approve applications submitted by residents for service.

To schedule a ride, seniors can call the Bergen County Division of Community Transportation at 201-368-5955. Seniors interested in accessing the Ryde4Life program must have a working cell phone with them during the transportation service and must apply for the ride 24 hours in advance of their appointment.

I encourage everyone to visit our COVID-19 Information Hub on our website, www.allendalenj.gov, to get the most up-to-date information on the pandemic, who is eligible to be vaccinated, and a complete list of vaccination locations.

As winter comes to an end, and the spring season starts, I am excited about our future. We have been through a lot as an Allendale community. All of our experiences have made us stronger. Let's continue to work together, while remaining vigilant, in creating a better Allendale.

Get In Touch. . . Stay Connected. . .
WWW.ALLENDALENJ.GOV



Ari Bernstein
Mayor

Liz Homan
Council President

Ed O'Connell
Councilman

Matt O'Toole
Councilman

Steve Sasso
Councilman

Jim Strauch
Councilman

Amy Wilczynski
Councilwoman

GARBAGE & RECYCLING REMINDERS

● West Garbage ● West Bulk ● West Recycling ● Metal
● East Garbage ● East Bulk ● East Recycling ● BCUA*

March 2021

| Sunday | Monday | Tuesday | Wednesday | Thursday | Friday | Saturday |
|-----------|---|--|--|---|-----------|-----------|
| | 1 WG | 2 EG | 3 EB | 4 ER | 5 | 6 |
| 7 | 8 WG | 9 EG | 10 WB | 11 WR | 12 | 13 |
| 14 | 15 WG | 16 EG | 17 | 18 ER | 19 | 20 |
| 21 | 22 WG | 23 EG | 24 M | 25 WR | 26 | 27 |
| 28 | 29 WG | 30 EG | 31 | | | |

- All items should be put out **starting at 6pm the night before** the scheduled collection.
- Wood pallets are not collected by our garbage contractor. You must make your own arrangements to dispose of them.
- You must schedule a one-time, courtesy move-out pickup with TatianaMarquis@AllendaleNJ.gov at **least 3 WEEKS in advance**.
- Remember to make sure that the lids are securely on top of your cans, especially garbage. This will help keep wildlife at bay.
- Collection containers can be no larger than 30 gallons.
- Bulk Trash must be placed on the curb and **not placed** in the road.
- Food containers being recycled need to be rinsed and cleaned before you dispose.
- Soiled pizza boxes are garbage and **NOT** recyclable.

Recycling Center

SATURDAYS from 9:00 am until 2:00 pm

SUNDAYS CLOSED

Compost Center Will Reopen April 10th

GARBAGE

- Household kitchen, office and bathroom trash
- Styrofoam

BULKY TRASH

- Furniture
- Carpeting
- Non-metal items
- Windows/mirrors/pane glass must be taped with an "X"
- Artificial Holiday Trees

METAL

- Anything that is least 75% metal



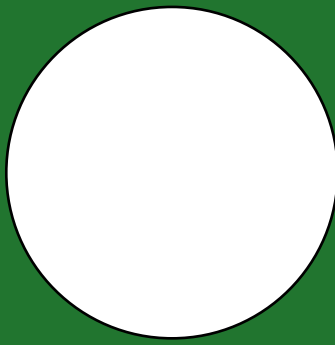
RECYCLING

Container One:

- Newspapers and inserts
- Junk mail, envelopes, office, notebook, construction paper
- Smooth and corrugated cardboard
- Glossy magazines and catalogs
- Soft covered books and telephone books
- Non-metallic wrapping paper and greeting cards
- Shredded paper
- Brown grocery bags

Container Two:

- Food and beverage containers
 - Plastic containers with a recycling code 1, 2, 5, 7
 - Aluminum cans, foil
 - Aseptic packaging (ex: soup, milk containers)
 - Metal cans and empty aerosol cans
 - Green, clear and brown glass bottles and jars
- ** Please note that there are 2 separate trucks that pick up recyclables.



THE BOROUGH OF
ALLENDALE

2021

COMPOST PERMIT

**STARTING MARCH 15TH AT 9AM
THE 2021 COMPOST PERMITS WILL
BE AVAILABLE FOR PURCHASE**

PERMITS COST \$30.00 APPLICATIONS CAN BE FILLED OUT ONLINE AT

WWW.ALLENDALENJ.GOV

**The Clerk's Office will contact you to coordinate
payment & pickup of your permit**

**THE COMPOST SITE WILL REOPEN
APRIL 10TH, 2021**



Dear Residents,

The Following Permits and Applications from the Construction and Zoning Office must be submitted online for processing. Please click the links below to access the forms from our website:

- [Certificates of Compliance](#) (For the sale of a home)
- [Tree Removal Permits](#)
- **Zoning Review Applications** ([Residential](#) and [Commercial](#))
- [Shed Zoning Permits](#)
- [Fence Zoning Permits](#)
- [Temporary Sign Permits](#)
- [Soil Movement Permits](#)
- [Dumpster Permits](#)
- [Sidewalk Permits](#)
- [Driveway Permits](#)

**If you have any questions, please contact our office
Monday - Friday 9am to 1pm at 201-818-4400 x201**

WHO IS ELIGIBLE FOR VACCINATION NEXT?

Beginning *Monday, March 15*, the following categories are eligible for vaccination:

- Educators, including support staff, in pre-K through 12th grade settings
- Childcare workers in licensed and registered settings
- Public and local transportation workers, including bus, taxi, rideshare, and airport employees; NJ TRANSIT workers; and Motor Vehicle Commission staff
- Public safety workers who are not sworn law enforcement or fire professionals, including probation officers and fire safety inspectors
- Migrant farm workers
- Members of tribal communities
- Individuals experiencing homelessness and those living in shelters, including domestic violence shelters

Additionally, beginning on *Monday, March 29*, frontline essential workers in the following categories are also eligible for vaccination:

- Food production, agriculture, and food distribution
- Eldercare and support
- Warehousing and logistics
- Social services support staff
- Elections personnel
- Hospitality
- Medical supply chain
- Postal and shipping services
- Clergy
- Judicial system

For the complete list of those who are currently eligible, please [CLICK HERE](#)

COVID-19 VACCINE LOCATIONS FOR ELIGIBLE RECIPIENTS

You can [register for a vaccine on the NJ Vaccine Scheduling System](#) and you will be notified when an appointment is available to you in the system.

If you are eligible but have not yet been notified about available appointments in the NJ Vaccine Scheduling System, you may also make an appointment directly with many of the designated vaccination sites across the state listed in the spreadsheet at the link below.

Please note that this spreadsheet includes both locations that can be contacted directly as well as locations that are only available for appointments through the NJ Vaccine Scheduling System - these sites list <https://covidvaccine.nj.gov/> as the Facility Website.

List of Vaccine Locations & Registration Links - [CLICK HERE](#)

STAYING UP TO DATE:

Stay up to date with the latest information on COVID-19:

Allendale COVID-19 Information Hub: <https://allendalenj.gov/covid-19-information/>

New Jersey COVID-19 Information Hub: <https://covid19.nj.gov/>

Bergen County's COVID-19 Information: <https://www.co.bergen.nj.us/health-promotion/2019-novel-corona-virus>

The County of Bergen in Partnership
with Bergen New Bridge Medical Center announce

Regional Community Drive-Thru COVID-19 Testing

Hosted by

Bergen Community College- Lot A
400 Paramus Road, Paramus, NJ

MARCH DATES

Tuesday, March 2nd
Thursday, March 4th
Saturday, March 6th

Tuesday, March 9th
Thursday, March 11th

Tuesday, March 16th
Thursday, March 18th
Saturday, March 20th

Tuesday, March 23rd
Thursday, March 25th

Check-in begins at 8AM
Testing begins promptly from 8:30AM-12PM

**COVID-19 Nasopharyngeal
Diagnostic PCR Test**

Results available in 48 hours.

Bring:

- ✓ **Identification**
(driver's license/ID card, social security card, passport or birth certificate)
- ✓ **Proof of Bergen County Residency, School ID, or Employment with Municipal or County government**
(copy of lease, driver's license, utility bill, work ID)
- ✓ **Insurance card, if applicable**

Registration:

- **No walk-ups available**
- **You **MUST PRE-REGISTER!****
- **To register, please visit:**
BergenCovidTesting.com



ALL MOBILE TESTING SITES ARE WEATHER PERMITTING

In case of inclement weather, please visit www.co.bergen.nj.us for updates.



NOW, MORE THAN EVER, IT'S IMPORTANT TO STAY VIGILANT IN THE FIGHT AGAINST COVID-19

WEAR A MASK

WASH YOUR HANDS & AVOID CONTACT WITH YOUR FACE

KEEP SOCIAL DISTANCE

Wearing a mask in public

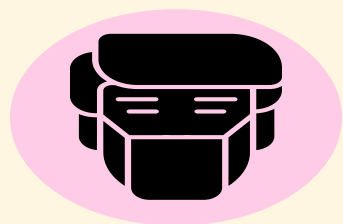


helps reduce the spread of germs.



We should **ALL** wear a cloth or disposable mask to protect each other.

Even if you don't feel sick, germs can spread to others through respiratory droplets produced by breathing, talking, sneezing and coughing.



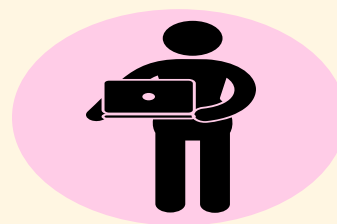
1. Wear Mask Correctly

- Make sure you can breathe through it
- Your nose and mouth should be covered
- Masks should not be placed on children under 2 years old or people who have trouble breathing



2. Maintain Healthy Habits

- Wash a cloth mask after use
- Avoid contact with sick people
- Wash hands often with soap and water; use hand sanitizer with at least 60% alcohol if soap and water aren't available



3. Keep Social Distancing

- Masks do not replace social distancing
- You may be sick (carrying germs) and not even know
- Masks + social distancing = less community spread of disease



<https://covid19.nj.gov/>



Questions? Call 2-1-1 or text NJCOVID to 898-211



THE BOROUGH OF **ALLENDALE**

THE YEARLY HYDRANT FLUSHING PROGRAM IS SCHEDULED TO START ON APRIL 5, 2021

Suez Water will be conducting hydrant testing and flushing throughout town over the next few weeks. Flushing will occur during the hours of 8:00 am through 3:00 pm. We request that customers use **minimal** water during the flushing in their area to avoid the possibility of drawing sediments into the household plumbing. We regret any inconvenience the flushing program may cause you. If you have any questions or would like more information please contact Suez Water at 855-367-6708

[Zone 1](#) – Anticipated Start Date 4/05, Anticipated Completion Date 4/14

[Zone 2](#) – Anticipated Start Date 4/14, Anticipated Completion Date 4/22

[Zone 3](#) – Anticipated Start Date 4/22, Anticipated Completion Date 5/04

[Zone 4](#) – Anticipated Start Date 5/04, Anticipated Completion Date 5/13

[Zone 5](#) – Anticipated Start Date 5/13, Anticipated Completion Date 5/21

County Roads (Franklin Turnpike, Forest Rd., E. Allendale Ave.) - 3 Days 5/21 to 5/25

Please note that these dates are tentative and subject to change.

To cleanse the system, Suez Water systematically open our fire hydrants to increase water flows – allowing us to “flush” any minerals and deposits from the pipes. While flushing the system won’t interrupt your water service, when crews are working in your area, you may notice a temporary drop in water pressure or discolored water. This is discoloration is normal. If you are experiencing any discolored water simply let your water run until it is clear.

Customer Tips:

- Avoid running your tap water and using the washing machine or dishwasher while crews are flushing in your area.
- If discolored water occurs, simply run the cold water for a few minutes until it clear. This will allow the sediment to work its way through your pipes.
- Check for discolored water before using the washing machine or dishwasher. Wait until the water runs clear at the tap before doing laundry or running the dishwasher. NOTE: If your laundry becomes stained, DO NOT PUT YOUR LAUNDRY IN THE DRYER. Rewash clothes immediately using detergent and add a rust remover. Most rust removers can also be used on stained fixtures.

In some cases, slight discoloration might linger for a few hours. This discoloration only affects the appearance of the water and does not affect water quality. No health hazards are associated with discolored water from hydrant flushing.

If water pressure or water volume seems low after flushing has been completed, check your faucet screens for trapped particles.



FREE DIGITAL ACCESS TO The New York Times

FROM WORK, HOME OR ON-THE-GO
Visit: LeeMemorialLibrary.org/digital-new-york-times

EXCLUSIVELY FOR ALLENDALE RESIDENTS
Compliments of
LEE MEMORIAL LIBRARY



ALLENDALE FIRE DEPARTMENT



WHEN YOUR CARBON MONOXIDE OR SMOKE ALARM GOES OFF CALL 911 IMMEDIATELY AND EVACUATE THE HOUSE! LET US INVESTIGATE THE CAUSE AND DETERMINE THAT YOU AND YOUR FAMILY ARE SAFE TO RETURN!

**HELP US KEEP
ALLENDALE SAFE!
PLEASE CLEAR ANY FIRE
HYDRANTS NEAR YOUR
HOME AFTER A SNOW
STORM SO WE CAN EASILY
AND SAFELY ACCESS
THEM IN AN EMERGENCY!
THANK YOU!**



**THE ALLENDALE FIRE DEPARTMENT
IS ALWAYS LOOKING FOR NEW MEMBERS!**

WE ARE IN NEED OF MEMBERS TO CONTINUE TO SERVE THE COMMUNITY!

If you are between the ages of 16 and 18, you are eligible to join as a Junior Member.

Anyone 18 years or older is eligible to join the active department.

ANYONE INTERESTED IN JOINING EMAIL: firechief@allendalenj.gov



ALLENDALE

OFFICE OF EMERGENCY MANAGEMENT

Include your children in planning for an emergency. Teach them how to get help and what to do in different situations. Practice your household disaster plan with your children and quiz them about preparedness information.

What Every Child Should Know:

- ✓ Family name, address and phone number, and know where to meet in case of an emergency. Children too small to memorize this could carry a small index card that lists emergency information. You could clip it to their shirt or place it in a pocket. Consider laminating this card so it will last longer.
- ✓ Never to touch wires lying on the ground or hanging from poles.
- ✓ How to identify the smell of gas. Tell them that if they smell it, they should tell a grown-up or call 911 and go to a safe area outside. Natural gas smells like rotten eggs.
- ✓ How and when to call 911. When you call 911 in the borough, the phone is answered at the Allendale Police station. Don't ever be afraid to call 911, we are here to help you and your family.

More information on preparing your children for emergencies can be found at <https://www.ready.gov/kids> or by contacting OEM Coordinator Michael Dillon at oemdirector@allendalenj.gov



12 WAYS TO PREPARE

| | | | | | |
|---|--|--|---|--|--|
| <input type="checkbox"/>  Sign up for Alerts and Warnings | <input type="checkbox"/>  Make a Plan | <input type="checkbox"/>  Save for a Rainy Day | <input type="checkbox"/>  Practice Emergency Drills | <input type="checkbox"/>  Test Family Communication Plan | <input type="checkbox"/>  Safeguard Documents |
| <input type="checkbox"/>  Plan with Neighbors | <input type="checkbox"/>  Make Your Home Safer | <input type="checkbox"/>  Know Evacuation Routes | <input type="checkbox"/>  Assemble or Update Supplies | <input type="checkbox"/>  Get Involved in Your Community | <input type="checkbox"/>  Document and Insure Property |

Quick Notes...

Bergen County Mental Health & Community Support Resources

Allendale/Saddle River
Rotary Club



THE ALLENDALE/SADDLE RIVER ROTARY IS CONTINUING OUR REGULAR NON-PERISHABLE DONATION PICKUPS TO BENEFIT OASIS - A HAVEN FOR WOMEN AND CHILDREN IN PATERSON.

MARCH MONTHLY PICKUP IS 3/26/21

THIS MONTH'S REQUESTED ITEMS:
CANS OF TUNA, BEANS, STEWS/SOUPS

PLEASE TEXT HEIDI AT 201.747.2874 WITH YOUR ADDRESS TO BE ADDED TO THE LIST.

Allendale/Saddle River
Rotary Club

2021 ALLENDALE/SADDLE RIVER ROTARY FOUNDATION SCHOLARSHIP

Students residing in Allendale, Ho-Ho-Kus, Saddle River are Upper Saddle River are eligible for this award. Candidates must have the following qualifications:

- Must be a graduating senior
- Accepted into a four (4) year accredited college
- Active in extra curricular activities or working a part-time job

DEADLINE: THURSDAY, APRIL 1, 2021
VISIT WWW.ASRROTARY.ORG FOR THE APPLICATION.

**PLEASE BE
A GOOD
NEIGHBOR**



**CLEAN UP
AFTER YOUR
DOG**

[CLICK HERE FOR ORDINANCE](#)

ALLENDALE PUBLIC SCHOOLS INTEGRATED PRESCHOOL PROGRAM FOR 2021-2022

The Allendale School District is pleased to announce that we will continue to offer an Integrated Preschool (IPS) Program for the 2021-2022 school year at Hillside School. The IPS Program incorporates the education of general education preschoolers with preschoolers with special needs. We will offer one program for 3-year-olds (9:00AM – 11:30AM), and one for 4-year-olds (12:30PM – 3:00PM). In order to be accepted in the IPS programs, children must be 3 or 4 years old by October 1, 2021, and must be bathroom trained. There is an annual tuition payment of \$4,000 for accepted general education students.

Applications for general education students are available on the Hillside School website at www.allendalek8.com/hillside under Preschool Lottery on the right side of our homepage, and will be accepted until 3:00PM, Wednesday, March 17, 2021. In the event the District does not have enough “seats” for all of the registered children, we will use a lottery system.

All registrations must be complete in order to participate in the lottery.

Students with special needs are placed in the program through an evaluation process performed by the Department of Special Services.

Mayor & Council Corner

Mayor & Council Virtual Meetings

Thursday, March 11th at 7:30pm

Thursday, March 25th at 7:30pm

To join the meeting from your computer, tablet or smartphone.

<https://global.gotomeeting.com/join/302918517>

You can also dial in using your phone.

Phone Number: (872) 240-3212

Access Code: 302-918-517

New to GoToMeeting? Get started by clicking below.

<https://global.gotomeeting.com/install/302918517>



ADMINISTRATIVE OFFICES REMAIN CLOSED TO THE PUBLIC, HOWEVER, WE ARE WORKING. PLEASE REACH OUT IF WE CAN BE OF ASSISTANCE.

BOROUGH PHONE NO. (201) 818-4400

***ADMINISTRATION, CLERK'S OFFICE,
BOARD OF HEALTH, & TAX ASSESSOR'S OFFICE***

Ron Kistner, Administrative Officer

RonKistner@AllendaleNJ.gov OR Ext. 501

Michelle Ryan, Acting Clerk

MichelleRyan@AllendaleNJ.gov OR Ext. 216 & 200

Tatiana Marquis, Deputy Clerk

TatianaMarquis@AllendaleNJ.gov OR Ext. 218

John Gil, Director of Communication

JohnGil@AllendaleNJ.gov OR Ext. 211

Angela Mattiace, Tax Assessor

AngelaMattiace@AllendaleNJ.gov OR Ext. 210

VITAL STATISTICS RECORDS

Northwest Bergen Regional Health Commission 201-445-7217

BUILDING DEPARTMENT

Technical Assistant 201-818-4400 x201

Anthony Hackett, Construction Official

CodeOfficial@AllendaleNJ.gov OR Ext. 208

LAND USE, ENGINEERING, & PROPERTY MAINTENANCE

Linda Garofalo, Land Use Administrator

LindaGarofalo@AllendaleNJ.gov OR Ext. 212

TAX & FINANCE OFFICE/WATER PAYMENTS

Alissa Mayer, CFO & Water Collector

AlissaMayer@AllendaleNJ.gov OR Ext. 205

Gina Wittmaack, Tax Clerk

GinaWittmaack@AllendaleNJ.gov OR Ext. 206

LEE MEMORIAL LIBRARY

aldlcirc@bccls.org OR 201-327-4338

ALLENDALE MUNICIPAL COURT

Rose Novelli-Salyer, Court Administrator

novellir@ho-ho-kusboro.com OR 201-652-0699

MAYOR & COUNCIL

Ari Bernstein, Mayor

AriBernstein@AllendaleNJ.gov

Liz Homan, Council President

LizHoman@AllendaleNJ.gov

Water, Sewer & Public Utilities Committee

Ed O'Connell, Councilman

EdwardOConnell@AllendaleNJ.gov

Public Safety Committee

Matt O'Toole, Councilman

MatthewOTOole@AllendaleNJ.gov

Administration, Finance & Human Resources Committee

Steve Sasso, Councilman

SteveSasso@AllendaleNJ.gov

Land Use & Construction Code Committee

Jim Strauch, Councilman

JimStrauch@AllendaleNJ.gov

Public Works Committee

Amy Wilczynski, Councilwoman

AmyWilczynski@AllendaleNJ.gov

Facilities, Parks & Recreation Committee

Get In Touch. . . Stay Connected. . .
WWW.ALLENDALENJ.GOV



@ALLENDALENJBOROUGH