



THE BOROUGH OF ALLENDALE

Happenings

AUGUST 2  22

A monthly electronic newsletter
to keep residents informed.
Please encourage friends and
neighbors to sign up for Constant
Contact by [Clicking Here](#)

A message from Mayor Bernstein. . .

Just a reminder that due to the current and forecasted drier weather conditions and in an effort to preserve water pressure for critical services like firefighting, we ask that all residents abide by the Phase 2 Water Restrictions.

The New Jersey Department of Environmental Protection has recently issued a statewide drought WATCH. During a drought watch, residents are asked to voluntarily conserve water to lessen the stress on our water systems. The lack of rain has also increased the chance of fire. In fact, we recently experienced a brushfire right here in town. Detailed information on the Phase 2 Water Restrictions and how you can monitor the current fire danger status can be found in this issue of the Borough Newsletter.

A tradition that I'm so happy we can bring back is Allendale's "Mayor for a Day". I want to congratulate our two honorary "Mayors for a Day" Sid & Jai. A "Mayor for a Day" was auctioned at the Allendale Foundation for Educational Excellence Annual Dinner and Auction, an event that helps fund grants to enrich the Pre-K through 8th Grade educational experiences at Hillside and Brookside Schools. Sid & Jai were the winners! On August 18th they will learn all about how Allendale's government and borough operate and will join me in running the Mayor and Council meeting that evening. I'm looking forward to a great day!

I hope everyone enjoys the last few weeks of summer with family and friends! Happy August Allendale!

Get In Touch. . . Stay Connected. . .
WWW.ALLENDALENJ.GOV



Ari Bernstein
Mayor

Amy Wilczynski
Council President

Liz Homan
Councilwoman

Susanne Lovisolo
Councilwoman

Ed O'Connell
Councilman

Matt O'Toole
Councilman

Steve Sasso
Councilman



MESSAGE FROM THE ALLENDALE WATER COMMITTEE

WATER RESTRICTIONS

We want to remind residents that Allendale continues to be under Phase 2 Water restrictions. Phase 2 restrictions are the following:

In-Ground Lawn Sprinklers from 12:00 am to 4:00 am only!

Hose Supplied Lawn Sprinklers from 7:00 am to 9:00 am & 7:00 pm to 9:00 pm

Even House Numbers: Tuesday, Thursday, Saturday

Odd House Numbers: Wednesday, Friday, Sunday

Monday is a system recharge day. No Watering Permitted*

- *Hand-watering is permitted for gardens, shrubs, and new plantings
- No washing of buildings or cars is permitted
- The use of water for other household purposes is not restricted.

Due to the current and forecasted drier weather conditions and in an effort to preserve water pressure for critical services like firefighting, we ask that all residents abide by the Phase 2 Water restrictions. The New Jersey Department of Environmental Protection has also recently issued a statewide drought WATCH. During a drought watch, residents are asked to voluntarily conserve water to lessen the stress on our water systems.

Thank you to everyone for your cooperation.

WATER SALE UPDATE

The sale of the Allendale water system to Veolia continues to move forward and we are working towards an October or November closing. While the sale is moving forward, Veolia continues to work on temporary PFAS treatment options for Allendale's wells. Both Allendale and Veolia are committed to ensuring the safety of our water and will continue to work vigilantly toward this goal.

SEWERS

It is illegal for residents to have their sump pumps connected to their sewer outflow. A sump pump that is hooked up incorrectly may be pumping underground spring water into our sewer system, causing a significant impact on the Borough's sewage charges.



THE BOROUGH OF
ALLENDALE

Water Restriction in Effect:

PHASE 2

Phase 2 Water Restrictions in Effect As of Tuesday, July 12, 2022

There is a great demand for water because of the heat and lack of rain. One of the Borough's wells is temporarily out of service. To ensure water availability for drinking and emergency services, such as fighting fires, we ask that residents follow the restrictions outlined below:

In-Ground Lawn Sprinklers from 12:00am to 4:00am only!

Hose Supplied Lawn Sprinklers from 7:00am to 9:00am and 7:00pm to 9:00pm

Even House Numbers: Tuesday, Thursday, Saturday

Odd House Numbers: Wednesday, Friday, Sunday

Monday is a system recharge day. No Watering Permitted*

- *Hand-watering is permitted for gardens, shrubs, and new plantings
- No washing of buildings or cars is permitted
- Use of water for other household purposes is not restricted.

Restrictions will be enforced: 1 warning, followed by a court summons. Fines up to \$1,000.00

By order of Ari Bernstein, Mayor

Thank you for your perseverance as we work together to preserve our water and keep our borough safe. Should you have any questions or concerns, please contact Councilwoman Liz Homan, Water Committee Chair. Lizhoman@allendalenj.gov



ALLENDALE FIRE DEPARTMENT

THE ALLENDALE FIRE DEPARTMENT IS ALWAYS LOOKING FOR NEW MEMBERS!

WE ARE IN NEED OF MEMBERS TO CONTINUE TO SERVE THE COMMUNITY!

If you are between the ages of 16 and 18, you are eligible to join as a Junior Member.

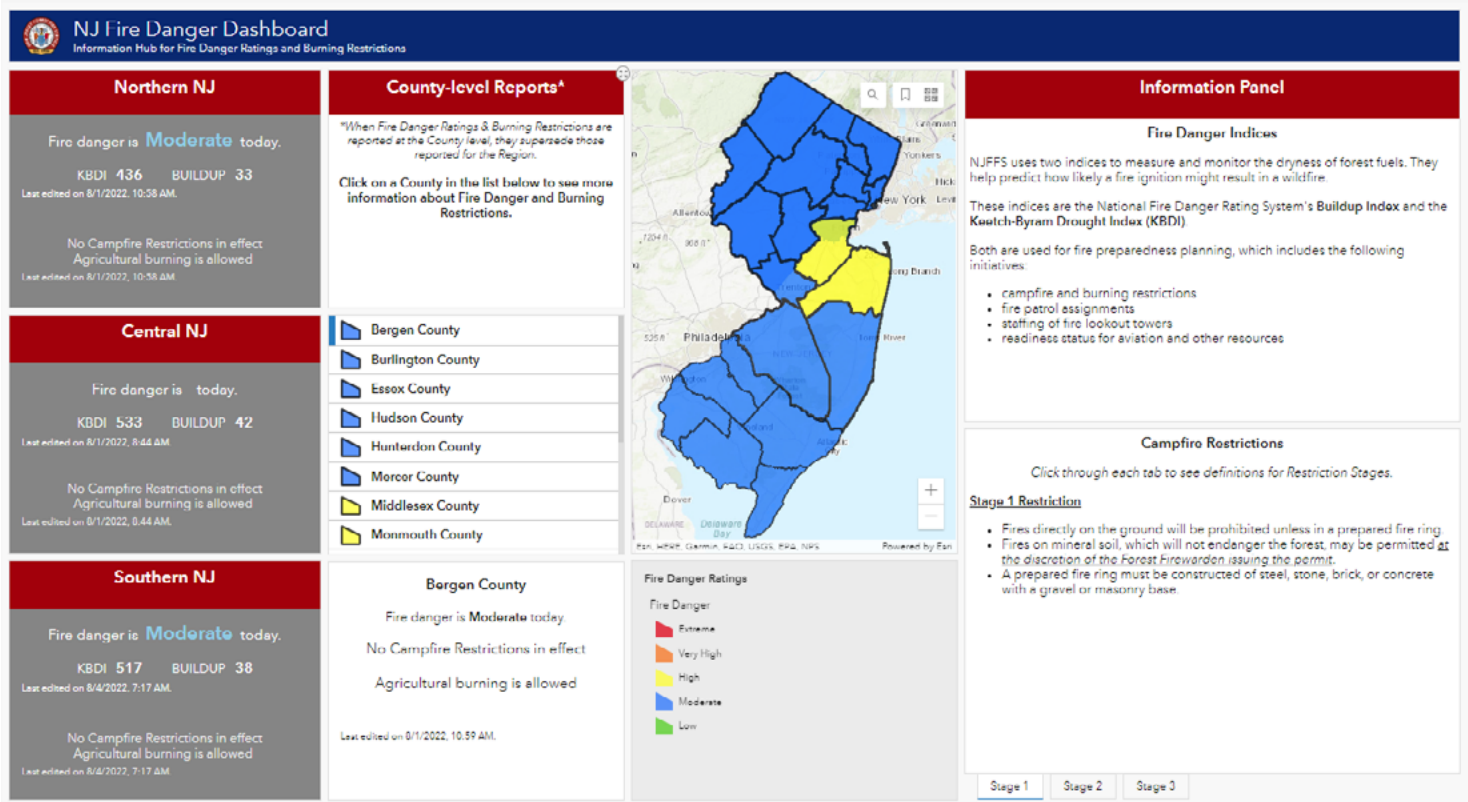
Anyone 18 years or older is eligible to join the active department.

ANYONE INTERESTED IN JOINING EMAIL: firechief@allendalenj.gov

NEW JERSEY FIRE DANGER DASHBOARD

With the drier weather we have been experiencing it's important to be cognizant of fire prevention. As always, we urge all residents to please be mindful of any outdoor open flames or when disposing of cigarettes. You can stay up to date with the current fire danger status by clicking the link below.

<https://www.nj.gov/dep/parksandforests/fire/>





ALLENDALE POLICE DEPARTMENT

CROSS WITH CARE – SCHOOL GUARD EDITION

Did you know that the Borough of Allendale employs guards to cover twelve (12) daily posts throughout town? These guards work diligently during the school year to protect our children crossing streets. Our guards are dedicated, caring, and professional. The borough also employs per-diem fill in guards as needed. We could always need additional fill-in guards. Once a post is formally established, it must be covered whenever one the regular guards is absent. Posts are sometimes covered by police officers when relief guards are unavailable. I strongly encourage residents to not only consider applying for a position but think about a family member or friend who might be interested. School will be back in session shortly; join our team and contribute to the safety of our children!

Michael T. Dillon
Chief of Police

**ALLENDALE
POLICE DEPARTMENT**

**HELP
WANTED**

BE A PART OF OUR TEAM!
CONTRIBUTE TO THE SAFETY OF OUR CHILDREN!
BECOME AN ALLENDALE SCHOOL CROSSING GUARD!

\$20 / HOUR
PER-DIEM POSITIONS OPEN NOW!

WORK TIMES DURING NORMAL SCHOOL DAYS:
7:45 AM TO 9:00 AM
11:15 AM TO 12:45 AM
3:00 PM TO 4:00 PM

**RELIEF/FILL IN GUARDS CAN ELECT TO COVER ALL THREE
TIMES OR ONE OR TWO! EVERY BIT HELPS! TRAINING,
EQUIPMENT, AND PERIODIC PHYSICAL INCLUDED!**

**CONTACT THE ALLENDALE POLICE AT info@allendalepd.org OR
201-825-1900 FOR MORE INFORMATION OR TO APPLY!**



ALLENDALE AMBULANCE CORPS

CELEBRATING 85 YEARS OF SERVICE!

Ambulance Lights & Sirens Question and Answer:

Q. Why does your ambulance sometimes not use lights and sirens?

A. Studies have shown that drivers tend to panic when they see and hear an emergency vehicle behind them using lights and sirens. Also, many times it is determined that sirens cause distress to the patient. Thus, best practice for Ambulances has been to shut off lights and sirens when transporting patients to the hospital to ensure the crew and patient have a safe and uneventful trip to the Emergency Room. However, even if you do not see lights or hear sirens, but do notice the ambulance, drive carefully. Please be mindful that crews are very likely working on a patient while the rig is moving and any sudden stops or quick turns could injure the crew or the patient.

Q. When do Ambulances use lights and sirens?

A. Emergency lights and sirens are typically used when driving to an emergency, if a patient requires immediate medical care, or it is determined the patient is quickly in need of immediate medical assistance. If you see or hear an emergency vehicle coming down the road, please look around to determine the vehicle's location. Remember, it is NJ State Law that drivers must yield to allow ambulances to pass. When you pull over for an emergency vehicle, use these simple tips:

1. Do NOT panic. Ambulance Drivers have gone through rigorous training and are carefully watching for you to pull over safely.
2. Take a moment to assess traffic and your surroundings in order to discern the best place to pull over to allow the ambulance to pass.

Allendale Volunteer Ambulance Corps: Service Allendale for over 85 years! Come and join us! For more information, call Chief Daryl D'Amore Bottaro, 201-739-4715.



Crestwood Lake

EVENTS AT THE LAKE

ALL EVENTS ARE OPEN TO THE PUBLIC

August 28th, 7:00pm

CRESTWOOD FOLK FEST:

A NIGHT OF MUSIC WITH 4 BANDS:
THE LOWLIES - HUSBAND & WIFE, CALEB & CAROLYN SPAULDING
TWO FLOORS - ALLENDALE NATIVE SHAANT SHISHMANIAN
NOHA - ALLENDALE NATIVE NOAH REDFIELD
LEO SAWIKIN - NY SINGER/SONGWRITER



September 1st
 MOVIE NIGHT - ENCANTO

***** VISIT *****
WWW.ALLENDALENJ.GOV
 FOR MORE
 INFORMATION

Crestwood Lake Hours

EARLY SEASON

May 28 – June 19

(Closed Weekdays)

Weekends/Holidays, 11:00am - 7:00pm

REGULAR SEASON

June 22 – September 5

Daily, 11:00am - 7:00pm

* Hours may be modified at the Borough's discretion.

REGISTRATION IS OPEN!

Please go to the Borough website at www.allendalenj.gov and click on the Crestwood Lake button. Then click on Crestwood Lake Registration. If you do not have a computer or are having difficulties, contact the Clerk's Office at 201-818-4400 x200 between 10am and 4pm. If you forgot your password from last year, **do not create a new account**. Please email info@allendalenj.gov for a new password.

Crestwood Lake 2022 Season Notes

2022 Rates

	RESIDENT RATE THRU MAY 30	RESIDENT RATE MAY 31 - SEPT 5	NON-RESIDENT RATE THRU - SEPT 5
1st Family Member	\$210	\$215	\$340
2nd Family Member	\$135	\$145	\$205
*Additional Family Members	\$65	\$65	\$130
Add-on: Babysitter/Caregiver	\$175	\$175	\$250 <small>Must Call 201-818-4400 x200 To Register</small>
Senior Rate (62 & Older)	\$65	\$70	\$85
Teen Memberships (13-17/No Adult Needed)	\$100	\$100	\$100 <small>Ho-Ho-Kus, Saddle River, & Upper Saddle River ONLY</small>
Allendale School or NHRHS Employees <small>Proof Required</small>	Must Call 201-818-4400 x200 To Register		
Veteran or Active Military <small>Proof Required</small>	Must Call 201-818-4400 x200 To Register		

* A family member is considered to be a parent, domestic partner and/or child or children under the age of 26 living in the house hold. Proof of residency may be required. Accounts will be audited, any improper registrations may result in membership cancellation.

GUESTS -

Daily Guest Rate of \$10 per person (Ages 3 and Up)

Badges are Back!

New badges with pictures will be issued for the 2022 season. You can upload a photo when registering online or stop at Borough Hall or the Lake and you can have your picture taken when picking up your badge. Please email info@allendalenj.gov if you have any questions.

Quick Notes...

Downtown Streetscape Update

The downtown streetscape beautification project will be commencing within the next month. The upgrades include new lights, pavers, trees, and garbage receptacles and will be beautiful when completed. Please bear with the appearance of some of the needed repairs in the sections that have not been refurbished yet.



BERGEN NEW JERSEY *County*

Bergen County Executive
James J. Tedesco, III
and the
Bergen County Board of Commissioners
Cordially invite you to

DEPARTMENT OF HUMAN SERVICES
DIVISION OF SENIOR SERVICES/ADRC

ANNUAL Senior Citizens Festival

Tuesday
September 13, 2022
Rain Date: Tuesday, September 20, 2022
10:00am - 2:00pm
VAN SAUN COUNTY PARK, PARAMUS

*If you are 60+ years old,
please join us for a special day including:*

- Lunch • Craft Fair • Zoo
- Music & Entertainment
- Information Tables & much more

**If you have special needs, please call at least
two weeks in advance to request accommodations.**

For more information, please call Senior Services at 201-336-7416.

James J. Tedesco, III
Bergen County Executive

Bergen County Board of Commissioners
Tracy Silna Zur, Chairwoman • Thomas J. Sullivan, Vice Chairman • Dr. Joan M. Voss, Chair Pro Tempore
Mary J. Amoroso • Ramon Hache, Sr. • Germaine M. Ortiz • Steven A. Tanelli

A colorful illustration depicting a park scene with several elderly people. In the foreground, a woman in a blue dress and a man in a red sweater with a cane stand on a path. To the left, a man and a woman sit on a wooden bench. In the background, a man stands near a picnic table with a bottle and a glass, and another woman stands near a large black pot on a tripod. The scene is set against a backdrop of green hills, trees, and a blue sky with clouds.

Make it a September to Remember at Lee Memorial Library

SEPTEMBER 8

Yoga with Sonia

Book Club: "Good Boy: My Life In Seven Dogs" by J.F. Boylan

SEPTEMBER 13

Pumpkin Bites: Autumn Nibbles Cooking Demo & Tasting

SEPTEMBER 15

Introduction to Cricut Crafting

SEPTEMBER 19

A Pro Photographer's

*Inside Tips: How To Take Great
Pictures with Your Smartphone*

SEPTEMBER 22

Yoga with Sonia

SEPTEMBER 29

Puzzle Competition

**Open to
Allendale
residents
age 19
and over**

Movie Matinee- every Tuesday

220/230 West Crescent Ave (formerly Black Millwork)



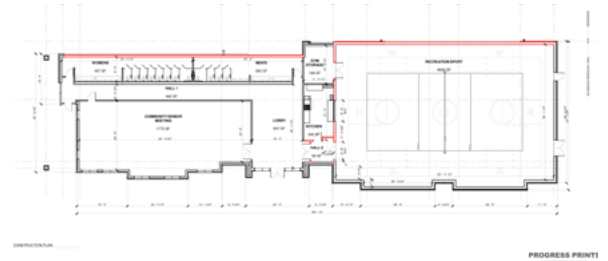
As the Borough navigated through COVID, the plans to develop a Community Center and Borough Hall at 220 West Crescent and a mini-warehouse at 230 West Crescent became significantly delayed.

We decided that in the best interest of the Borough, to split the project into two separate transactions. Since the back building (230 West Crescent) was going to maintain the same use, we were able to close and receive

\$10.2 MM to pay down the acquisition debt. It is currently operational and we are receiving revenue from the PILOT (payment in lieu of taxes).

The front building (220 West Crescent), provided bigger challenges. There were supply chain issues, labor shortages, and the rising cost of building materials. Our quotes were changing weekly and kept going up. We made a conscious decision to wait. During this time, we changed the way we worked as a Borough. We seamlessly transitioned to the virtual world and made many of our systems and operations more electronic. New office space was no longer a foreseeable need however meeting space for our community groups and clubs was still in demand. Currently, the existing council chambers are the only meeting space offered to the community.

After much thought and consideration, we decided the best value for the community was to keep Borough Hall where it is and make the entire facility at 220 West Crescent a Community Center with one half being a gym for fitness and physical activity and the other half being an open space for meetings. There will also be a commercial kitchen. The building will now be one story and skillfully designed with optionality... Meaning that if a second story ever needs to be added in the future, it can be easily adapted.



We anticipate the cost to be less and are currently completing the construction documents to get a new quote. We also applied for and received first-round approval of a grant to defray costs. This entire project has been acquired and will be built without any additional tax dollars.

There was a Town Hall Meeting on June 23rd which can be viewed at: <https://www.youtube.com/watch?v=z0CqycsFFF4>

If you have any questions, please email: amywilczynski@allendalenj.gov



GARBAGE & RECYCLING REMINDERS

THE BOROUGH OF

ALLENDALE 2022

GARBAGE & RECYCLING GUIDE

SOLID WASTE & RECYCLING CURBSIDE REGULATIONS & SCHEDULE

WG West Garbage

WB West Bulk

WR West Recycling

M Metal

EG East Garbage

EB East Bulk

ER East Recycling

BCUA*

January 2022

Monday	Tuesday	Wednesday	Thursday	Friday	Saturday	Sunday
2	WG	EG	EB	ER		
3	WG	EG	WB	WR		
4						
5	WG	EG				
6	WG	EG	WB	WR		
7						
8	WG	EG				
9	WG	EG	WB	WR		
10						
11	WG	EG				
12	WG	EG	WB	WR		
13						
14	WG	EG				
15	WG	EG	WB	WR		
16						
17	WG	EG				
18	WG	EG	WB	WR		
19						
20	WG	EG				
21	WG	EG	WB	WR		
22						
23	WG	EG				
24	WG	EG	WB	WR		
25						
26	WG	EG				
27	WG	EG	WB	WR		
28						
29	WG	EG				
30	WG	EG	WB	WR		
31						

February 2022

Monday	Tuesday	Wednesday	Thursday	Friday	Saturday	Sunday
1	WG	EG	EB	ER		
2	WG	EG	WB	WR		
3						
4	WG	EG				
5	WG	EG	WB	WR		
6						
7	WG	EG				
8	WG	EG	WB	WR		
9						
10	WG	EG				
11	WG	EG	WB	WR		
12						
13	WG	EG				
14	WG	EG	WB	WR		
15						
16	WG	EG				
17	WG	EG	WB	WR		
18						
19	WG	EG				
20	WG	EG	WB	WR		
21						
22	WG	EG				
23	WG	EG	WB	WR		
24						
25	WG	EG				
26	WG	EG	WB	WR		
27						
28	WG	EG				
29	WG	EG	WB	WR		
30						
31	WG	EG				

March 2022

Monday	Tuesday	Wednesday	Thursday	Friday	Saturday	Sunday
1	WG	EG	EB	ER		
2	WG	EG	WB	WR		
3						
4	WG	EG				
5	WG	EG	WB	WR		
6						
7	WG	EG				
8	WG	EG	WB	WR		
9						
10	WG	EG				
11	WG	EG	WB	WR		
12						
13	WG	EG				
14	WG	EG	WB	WR		
15						
16	WG	EG				
17	WG	EG	WB	WR		
18						
19	WG	EG				
20	WG	EG	WB	WR		
21						
22	WG	EG				
23	WG	EG	WB	WR		
24						
25	WG	EG				
26	WG	EG	WB	WR		
27						
28	WG	EG				
29	WG	EG	WB	WR		
30						
31	WG	EG				

April 2022

Monday	Tuesday	Wednesday	Thursday	Friday	Saturday	Sunday
1	BCUA	WG	EG	EB	WR	
2						
3	WG	EG	WB	WR		
4						
5	WG	EG				
6	WG	EG	WB	WR		
7						
8	WG	EG				
9	WG	EG	WB	WR		
10						
11	WG	EG				
12	WG	EG	WB	WR		
13						
14	WG	EG				
15	WG	EG	WB	WR		
16						
17	WG	EG				
18	WG	EG	WB	WR		
19						
20	WG	EG				
21	WG	EG	WB	WR		
22						
23	WG	EG				
24	WG	EG	WB	WR		
25						
26	WG	EG				
27	WG	EG	WB	WR		
28						
29	WG	EG				
30	WG	EG	WB	WR		
31						

May 2022

Monday	Tuesday	Wednesday	Thursday	Friday	Saturday	Sunday
1	WG	EG	EB	WR		
2	WG	EG	WB	WR		
3						
4	WG	EG				
5	WG	EG	WB	WR		
6						
7	WG	EG				
8	WG	EG	WB	WR		
9						
10	WG	EG				
11	WG	EG	WB	WR		
12						
13	WG	EG				
14	WG	EG	WB	WR		
15						
16	WG	EG				
17	WG	EG	WB	WR		
18						
19	WG	EG				
20	WG	EG	WB	WR		
21						
22	WG	EG				
23	WG	EG	WB	WR		
24						
25	WG	EG				
26	WG	EG	WB	WR		
27						
28	WG	EG				
29	WG	EG	WB	WR		
30						
31	WG	EG				

June 2022

Monday	Tuesday	Wednesday	Thursday	Friday	Saturday	Sunday
1	WG	EG	EB	WR	WG	EG
2	WG	EG	WB	WR	WG	EG
3						
4	WG	EG				
5	WG	EG	WB	WR		
6						
7	WG	EG				
8	WG	EG	WB	WR		
9						
10	WG	EG				
11	WG	EG	WB	WR		
12						
13	WG	EG				
14	WG	EG	WB	WR		
15						
16	WG	EG				
17	WG	EG	WB	WR		
18						
19	WG	EG				
20	WG	EG	WB	WR		
21						
22	WG	EG				
23	WG	EG	WB	WR		
24						
25	WG	EG				
26	WG	EG	WB	WR		
27						
28	WG	EG				
29	WG	EG	WB	WR		
30						
31	WG	EG				

July 2022

Monday	Tuesday	Wednesday	Thursday	Friday	Saturday	Sunday
1	WG	EG	EB	WR	WG	EG
2	WG	EG	WB	WR	WG	EG
3						
4	WG	EG				
5	WG	EG	WB	WR		
6						
7	WG	EG				
8	WG	EG	WB	WR		
9						
10	WG	EG				
11	WG	EG	WB	WR		
12						
13	WG	EG				
14	WG	EG	WB	WR		
15						
16	WG	EG				
17	WG	EG	WB	WR		
18						
19	WG	EG				
20	WG	EG	WB	WR		
21						
22	WG	EG				
23	WG	EG	WB	WR		
24						
25	WG	EG				
26	WG	EG	WB	WR		
27						
28	WG	EG				
29	WG	EG	WB	WR		
30						
31	WG	EG				

August 2022

Monday	Tuesday	Wednesday	Thursday	Friday	Saturday	Sunday
1	WG	EG	EB	WR	WG	EG
2	WG	EG	WB	WR	WG	EG
3						
4	WG	EG				
5	WG	EG	WB	WR		
6						
7	WG	EG				
8	WG	EG	WB	WR		
9						
10	WG	EG				
11	WG	EG	WB	WR		
12						
13	WG	EG				
14	WG	EG	WB	WR		
15						
16	WG	EG				
17	WG	EG	WB	WR		
18						
19	WG	EG				
20	WG	EG	WB	WR		
21						
22	WG	EG				
23	WG	EG	WB	WR		
24						
25	WG	EG				
26	WG	EG	WB	WR		
27						
28	WG	EG				
29	WG	EG	WB	WR		
30						
31	WG	EG				

September 2022

Monday	Tuesday	Wednesday	Thursday	Friday	Saturday	Sunday
1	WG	EG	EB	WR	WG	EG
2	WG	EG	WB	WR	WG	EG
3						
4	WG	EG				
5	WG	EG	WB	WR		
6						
7	WG	EG				
8	WG	EG	WB	WR		
9						
10	WG	EG				
11	WG	EG	WB	WR		
12						
13	WG	EG				
14	WG	EG	WB	WR		
15						
16	WG	EG				
17	WG	EG	WB	WR		
18						
19	WG	EG				
20	WG	EG	WB	WR		
21						
22	WG	EG				
23	WG	EG	WB	WR		
24						
25	WG	EG				
26	WG	EG	WB	WR		

[CLICK HERE FOR THE](#)
[2022 ALLENDALE](#)
[GARBAGE AND](#)
[RECYCLING GUIDE](#)

- All items should be put out *starting at 6pm the night before* the scheduled collection.
- Building materials and wood pallets *are not collected* by our garbage contractor. You must make your own arrangements to dispose of them.
- You must schedule a one-time, courtesy move-out pickup with info@AllendaleNJ.gov at **least 4 WEEKS in advance**. No metal, electronics, or recyclable materials collected.
- Remember to make sure that the lids are securely on top of your cans, especially garbage. This will help keep wildlife at bay.
- Collection containers can be no larger than 30 gallons.
- Bulk Trash must be placed on the curb and **not placed** in the road.
- Food containers being recycled need to be rinsed and cleaned before you dispose.
- Soiled pizza boxes are garbage and **NOT** recyclable.

Recycling Center & Compost Site

Hours of Operation Starting April 2nd
SATURDAYS from 9:00 am until 3:00 pm
SUNDAYS from 9:00 am until 1:00 pm
 Residents Must Have a Permit - No Landscapers Permitted

GARBAGE

- Household kitchen, office and bathroom trash
- Styrofoam

BULKY TRASH

- Furniture
- Carpeting
- Non-metal items
- Windows/mirrors/pane glass must be taped with an "X"

METAL

- Anything that is least 75% metal
- Artificial Holiday Trees



RECYCLING

Container One:

- Newspapers and inserts
- Junk mail, envelopes, office, notebook, construction paper
- Smooth and corrugated cardboard
- Glossy magazines and catalogs
- Soft covered books and telephone books
- Non-metallic wrapping paper and greeting cards
- Shredded paper
- Brown grocery bags

Container Two:

- Food and beverage containers
- Plastic containers with a recycling code 1, 2, 5, 7
- Aluminum cans, foil
- Aseptic packaging (ex: soup, milk containers)
- Metal cans and empty aerosol cans
- Green, clear and brown glass bottles and jars

** Please note that there are 2 separate trucks that pick up recyclables.



2022



COMPOST PERMIT

**THE 2022 COMPOST PERMITS ARE
AVAILABLE FOR PURCHASE**

PERMITS COST \$30.00. APPLICATIONS CAN BE FILLED OUT ONLINE AT

WWW.ALLENDALENJ.GOV

**COMPOST SITE 2022 SEASON
APRIL 2ND TO DECEMBER 18TH**

SATURDAYS - 9AM TO 3PM

SUNDAYS - 9AM TO 1PM

IMPORTANT MESSAGE: COVID-19 RATEPAYER RELIEF MEASURES

This notice announces relief measures for residential ratepayers experiencing economic hardship during the COVID-19 pandemic. Please review this message in its entirety. For more information, please go to our website at www.allendale.gov or Alissa Mayer, Water Collector at 201-818-4400 ext. 205 or alissamayer@allendalenj.gov.

INSTALLMENT PLAN AVAILABILITY

BE ADVISED that State law requires residential customers to be offered an installment plan for any water arrearages accruing between March 9, 2020 and March 15, 2022. To maintain the installment plan, a residential customer must make timely payments on all current charges. More information is available by calling VIOLIA/Allendale customer service at 855-367-6708.

LATE FEES, CHARGES AND PENALTIES

BE ADVISED that P.L. 2021, c. 317 prohibits local governments from charging residential customers interest, fees, or charges for late payment of water charges accruing between March 9, 2020 and March 15, 2022 until after March 15, 2022 at which time interest and penalties may begin to accrue. Late interest, fees or charges may be enforced against arrearages accruing before March 9, 2020 and after March 15, 2022.

BILL ASSISTANCE AND ARREARAGE FORGIVENESS PROGRAMS

The application period for the New Jersey Department of Community Affairs' Low Income Water Assistance Program (LIHWAP) is now open. This federally funded program will provide financial assistance to low-income households to reduce the balances on their residential water bills. LIHWAP will provide benefits directly to water service providers on behalf of residential customers. The assistance can be used, in order of priority, to:

- restore services where services have been terminated and pay reconnection fees and other charges accrued due to a disconnection;
- avoid service disruption for those residential customers who are in danger of disconnection (i.e., received shut off notices or have past due balances) and to help them afford bill payment going forward; and
- support those household customers who are current in their bills but might be in danger of falling behind in the near future.

Priority will also be given to families with elderly or disabled household members and/or with children under the age of five, no matter which category they fall into.

To be eligible for LIHWAP assistance, applicants must be water bill holders who are responsible for paying their water bills directly to the water provider. Also, applicants' total gross household income must be at or below 60% of the state median Income (\$6,439 a month for a family of four). The LIHWAP frequently asked questions webpage, available at <https://njdca-housing.dynamics365portals.us/lihwapfaq> has additional information about maximum income limits and other items.

Participants in the Low-Income Home Energy Assistance Program (LIHEAP) are automatically eligible for LIHWAP assistance so long as they are water bill holders.

People can apply online through the DCAid application portal at <https://njdca-housing.dynamics365portals.us/en-US/dcaid-services/>.

Those without computer or internet access can call 1-800-510-3102 to be directed to one of the community action agencies to assist them with starting, completing, and submitting an application online.

***ADMINISTRATION, CLERK'S OFFICE,
BOARD OF HEALTH, & TAX ASSESSOR'S OFFICE***

Ron Kistner, Administrative Officer

RonKistner@AllendaleNJ.gov OR Ext. 501

Linda L. Cervino, Clerk

LindaCervino@AllendaleNJ.gov OR Ext. 216

Amanda Richards, Administrative Assistant

AmandaRichards@AllendaleNJ.gov OR Ext. 218

John Gil, Director of Communication

JohnGil@AllendaleNJ.gov OR Ext. 211

Angela Mattiace, Tax Assessor

AngelaMattiace@AllendaleNJ.gov OR Ext. 210

Health Department

HealthDept@AllendaleNJ.gov OR Ext. 211

VITAL STATISTICS RECORDS

(MARRIAGE LICENSES, DEATH AND BIRTH CERTIFICATES)

Northwest Bergen Regional Health Commission 201-445-7217

BUILDING DEPARTMENT

Charlotte Zinn, Technical Assistant

CharlotteZinn@AllendaleNJ.gov OR Ext. 201

Anthony Hackett, Construction Official

CodeOfficial@AllendaleNJ.gov OR Ext. 208

LAND USE, ENGINEERING, & PROPERTY MAINTENANCE

Linda Garofalo, Land Use Administrator

LindaGarofalo@AllendaleNJ.gov OR Ext. 212

Mike Limatola, PMO

mikelimatola@allendalenj.gov

TAX & FINANCE OFFICE/WATER PAYMENTS

Alissa Mayer, CFO & Water Collector

AlissaMayer@AllendaleNJ.gov OR Ext. 205

Gina Wittmaack, Tax Collector

GinaWittmaack@AllendaleNJ.gov OR Ext. 206

ALLENDALE MUNICIPAL COURT

Rose Novelli-Salyer, Court Administrator

novellir@ho-ho-kusboro.com OR 201-652-0699

MAYOR & COUNCIL

Ari Bernstein, Mayor

AriBernstein@AllendaleNJ.gov

Amy Wilczynski, Council President

AmyWilczynski@AllendaleNJ.gov

Chair – Administration, Finance and Human Resources Committee

Member of Facilities, Parks and Recreation Committee

Liz Homan, Councilwoman

LizHoman@AllendaleNJ.gov

Chair – Water, Sewer, and Public Utilities Committee

Member of Public Works Committee

Susanne Lovisolo, Councilwoman

SusanneLovisolo@AllendaleNJ.gov

Chair – Land Use and Construction Code Committee

Member of Water, Sewer and Public Utilities Committee

Ed O’Connell, Councilman

EdwardOConnell@AllendaleNJ.gov

Chair – Public Works Committee

Member of Public Safety Committee

Matt O’Toole, Councilman

MatthewOTOole@AllendaleNJ.gov

Chair – Public Safety Committee

Member of Finance, Human Resources and Administration Committee

Steve Sasso, Councilman

SteveSasso@AllendaleNJ.gov

Chair – Facilities, Parks and Recreation Committee

Member of Land Use and Construction Code Committee

Get In Touch. . . Stay Connected. . .
WWW.ALLENDALENJ.GOV



@ALLENDALENJBOROUGH